

TAB 1

PROVENANCE - ILLUSTRATIVE ARCHITECTURE

THE COURTYARDS OF FISHERS PUD



PROVENANCE - FLOORPLANS

THE COURTYARDS OF FISHERS PUD



BONUS SUITE

Provenance

Although all floor plans, illustrations, and specifications are believed correct at the time of publication, the right is reserved to make changes, without notice or obligation. Dimensions and layout may vary. This information is for illustrative purposes only and not part of a legal contract.

© 2020 IP&G. This notice is "copyright management information" under the Digital Millennium Copyright Act, and is included to police and deter copyright infringement, and accordingly must not be removed or modified from any copy or derivative of this work.

PROVENANCE - FLOORPLANS

THE COURTYARDS OF FISHERS PUD



BONUS SUITE
ELEVATION A



BONUS SUITE
ELEVATION B

BONUS SUITE

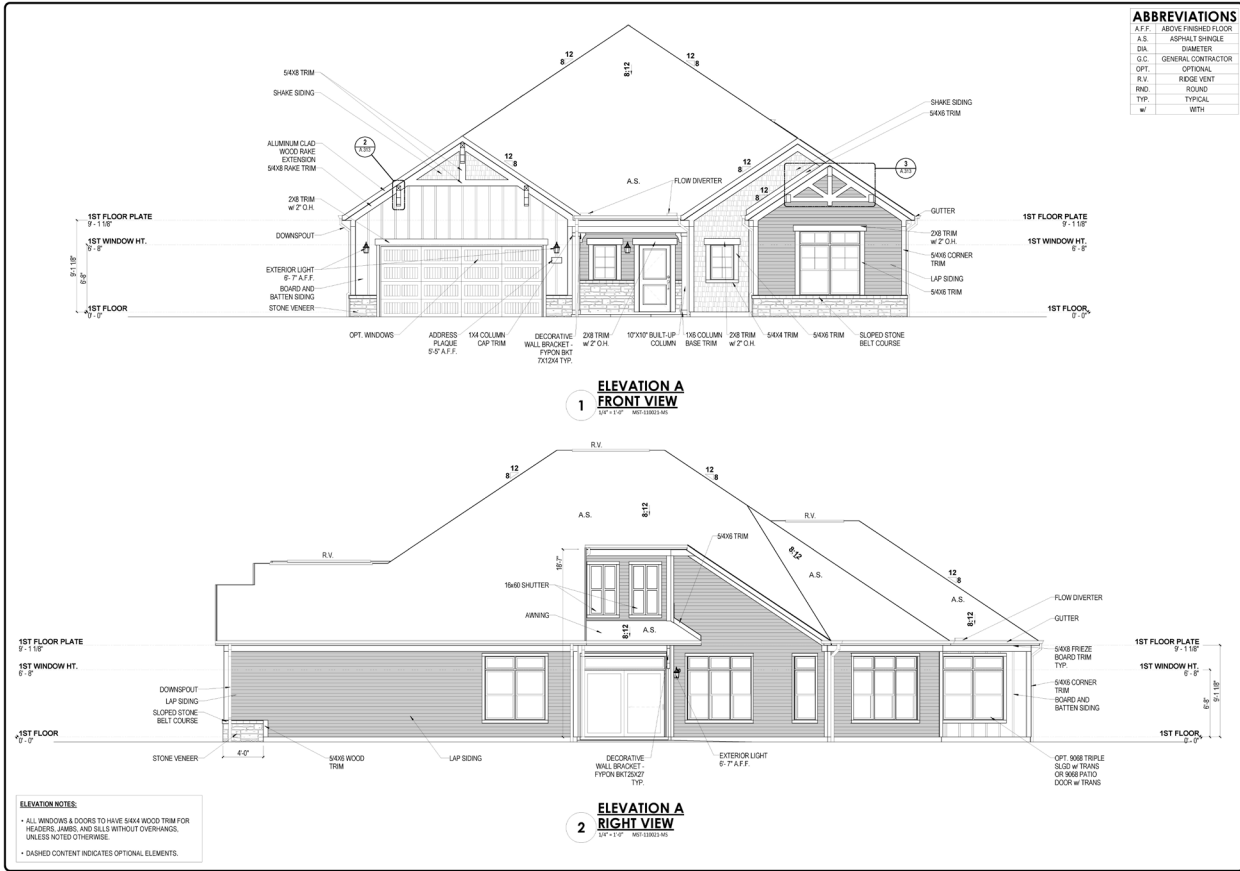
Although all floor plans, illustrations, and specifications are believed correct at the time of publication, the right is reserved to make changes, without notice or obligation. Dimensions and layout may vary. This information is for illustrative purposes only and not part of a legal contract.

© 2020 IP86. This notice is "copyright management information" under the Digital Millennium Copyright Act, and is included to police and deter copyright infringement, and accordingly must not be removed or modified from any copy or derivative of this work.

Provenance

PROVENANCE - ELEVATIONS

THE COURTYARDS OF FISHERS PUD



PROVENANCE - ELEVATIONS

PROJ. NO. DATE: 04/23/2021

PHOTO TYPE REVISION DATE: 04/23/2021

ELEVATIONS - ELEV. A

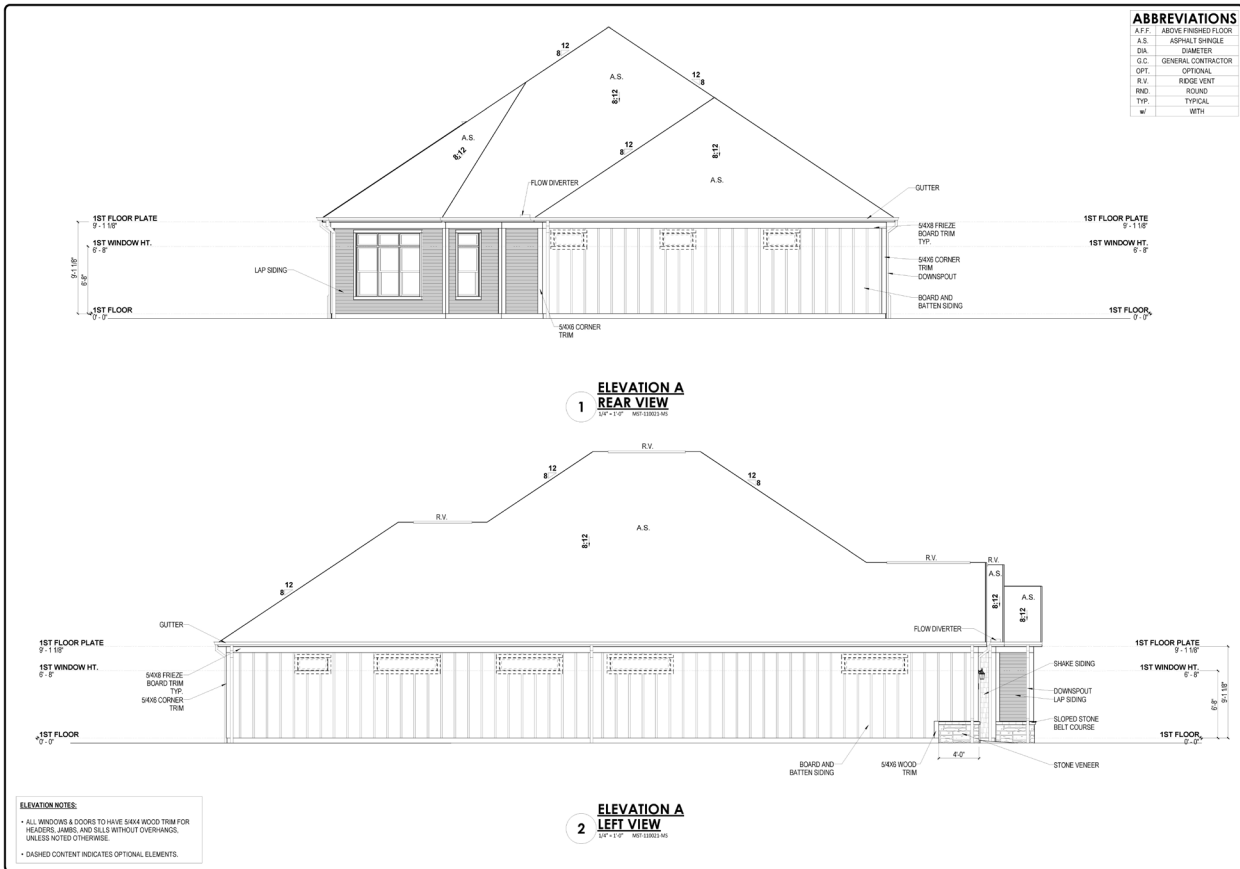
Project Code: E-1
Architectural Style: CRAFTSMAN
Change Number: LEFT

EPICOR COMMUNITIES FRANCHISING

LOCATION: 114th Ave N, Suite 100, Edina, MN 55424

SHEET NUMBER: **A.201.A**

PROPRIETARY RIGHTS NOTICE



PROVENANCE - ELEVATIONS

PROJ. NO. DATE: 05/17/2021

PHOTO TYPE REVISION DATE: 05/17/2021

ELEVATIONS - ELEV. A

Project Code: E-1
Architectural Style: CRAFTSMAN
Change Number: LEFT

EPICOR COMMUNITIES FRANCHISING

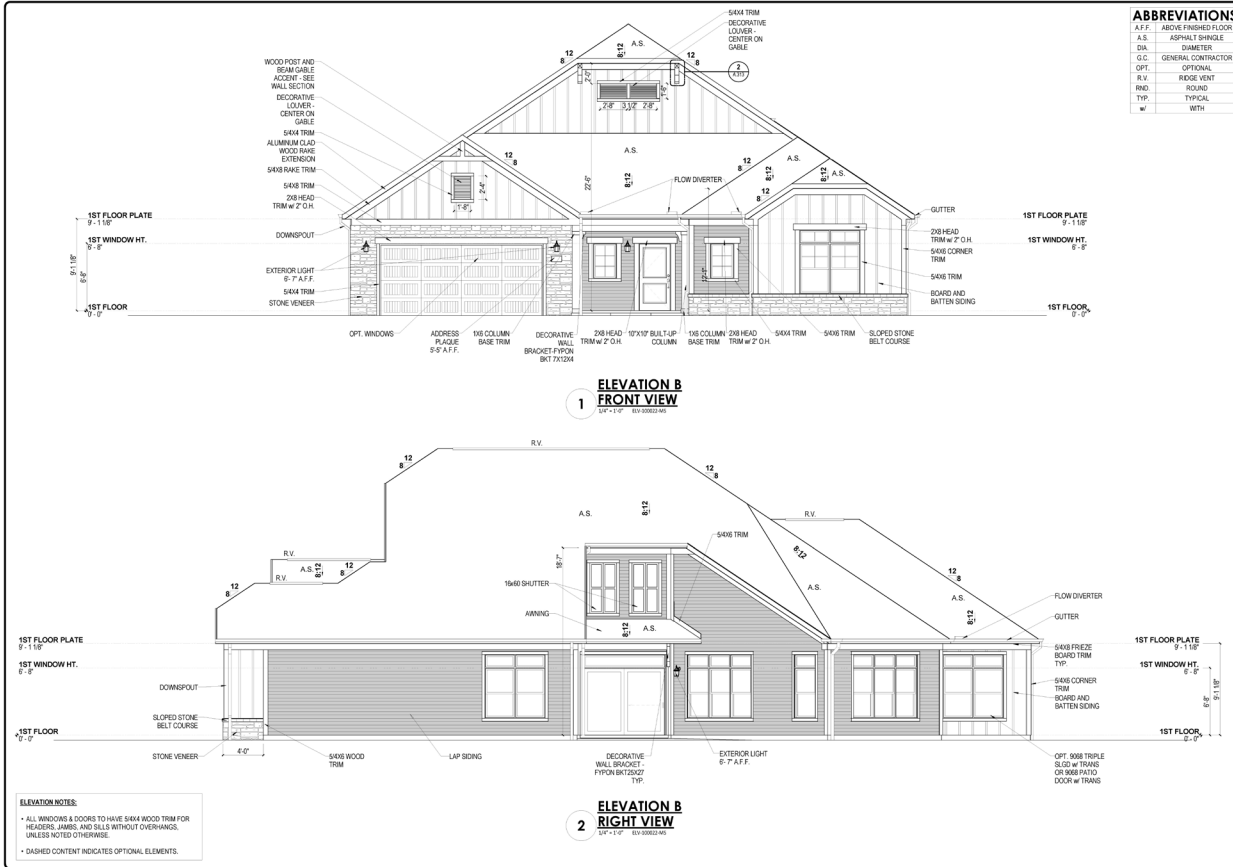
LOCATION: 114th Ave N, Suite 100, Edina, MN 55424

SHEET NUMBER: **A.205.A**

PROPRIETARY RIGHTS NOTICE

PROVENANCE - ELEVATIONS

THE COURTYARDS OF FISHERS PUD



ABBREVIATIONS

A.F.F.	ABOVE FINISHED FLOOR
A.S.	ASPHALT SHINGLE
G.C.	GENERAL CONTRACTOR
OPT.	OPTIONAL
R.V.	RIDGE VENT
RND.	ROUND
TYP.	TYPICAL
w/	WITH

ELEVATION NOTES

- ALL WINDOWS & DOORS TO HAVE S4X4 WOOD TRIM FOR HEADERS, JAMBS, AND SILLS WITHOUT OVERHANGS, UNLESS NOTED OTHERWISE.
- DASHED CONTENT INDICATES OPTIONAL ELEMENTS.

REVISIONS

NO.	DATE	REVISIONS

PHOTO TYPE REVISION DATE: **04/23/2021**

ELEVATIONS - ELEV. B

Project Code: **E-1**
 Architectural Style: **CRAFTSMAN**
 Change Set: **LEFT**

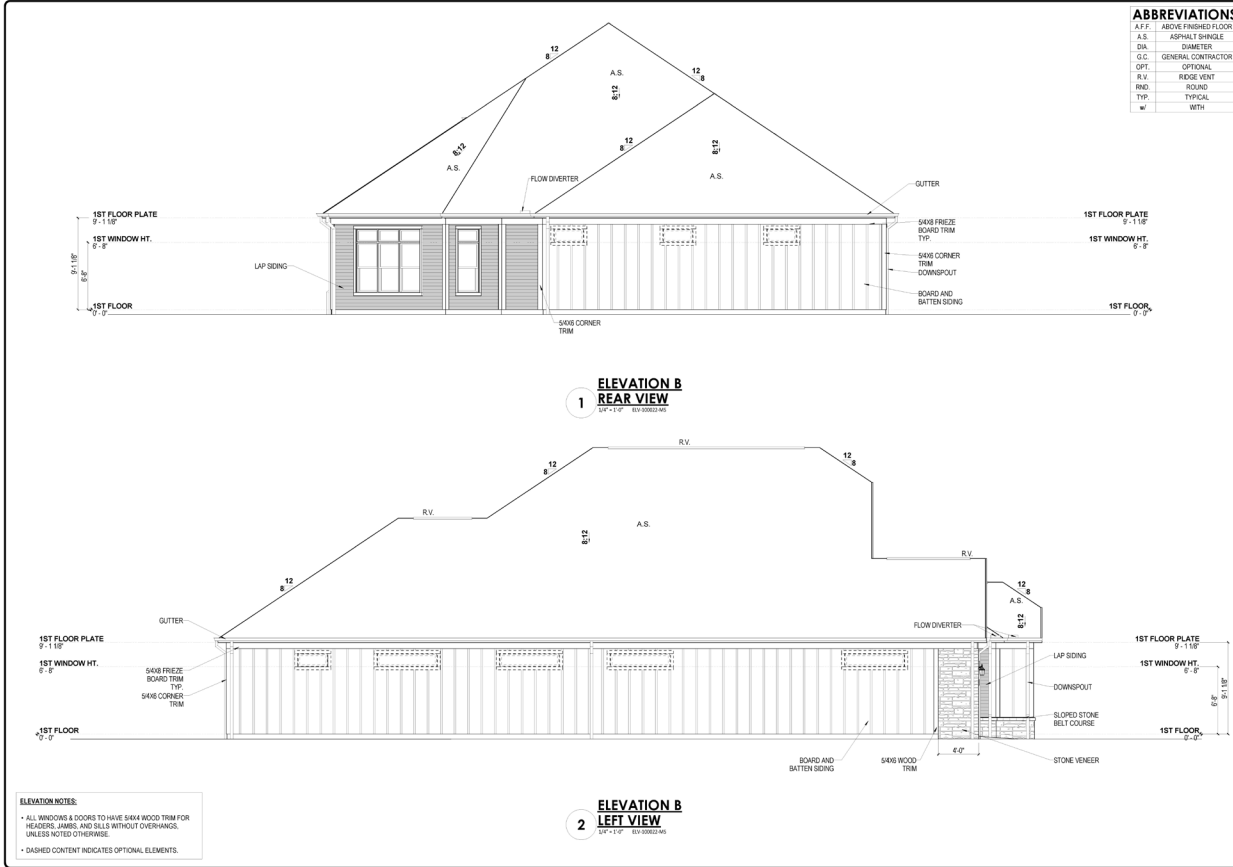
EPICOR COMMUNITIES FRANCHISING

LOCATION:

SHEET NUMBER
A.205.B

PROPRIETARY RIGHTS NOTICE

© 2020 EPICOR



ABBREVIATIONS

A.F.F.	ABOVE FINISHED FLOOR
A.S.	ASPHALT SHINGLE
G.C.	GENERAL CONTRACTOR
OPT.	OPTIONAL
R.V.	RIDGE VENT
RND.	ROUND
TYP.	TYPICAL
w/	WITH

ELEVATION NOTES

- ALL WINDOWS & DOORS TO HAVE S4X4 WOOD TRIM FOR HEADERS, JAMBS, AND SILLS WITHOUT OVERHANGS, UNLESS NOTED OTHERWISE.
- DASHED CONTENT INDICATES OPTIONAL ELEMENTS.

REVISIONS

NO.	DATE	REVISIONS

PHOTO TYPE REVISION DATE: **05/17/2021**

ELEVATIONS - ELEV. B

Project Code: **E-1**
 Architectural Style: **CRAFTSMAN**
 Change Set: **LEFT**

EPICOR COMMUNITIES FRANCHISING

LOCATION:

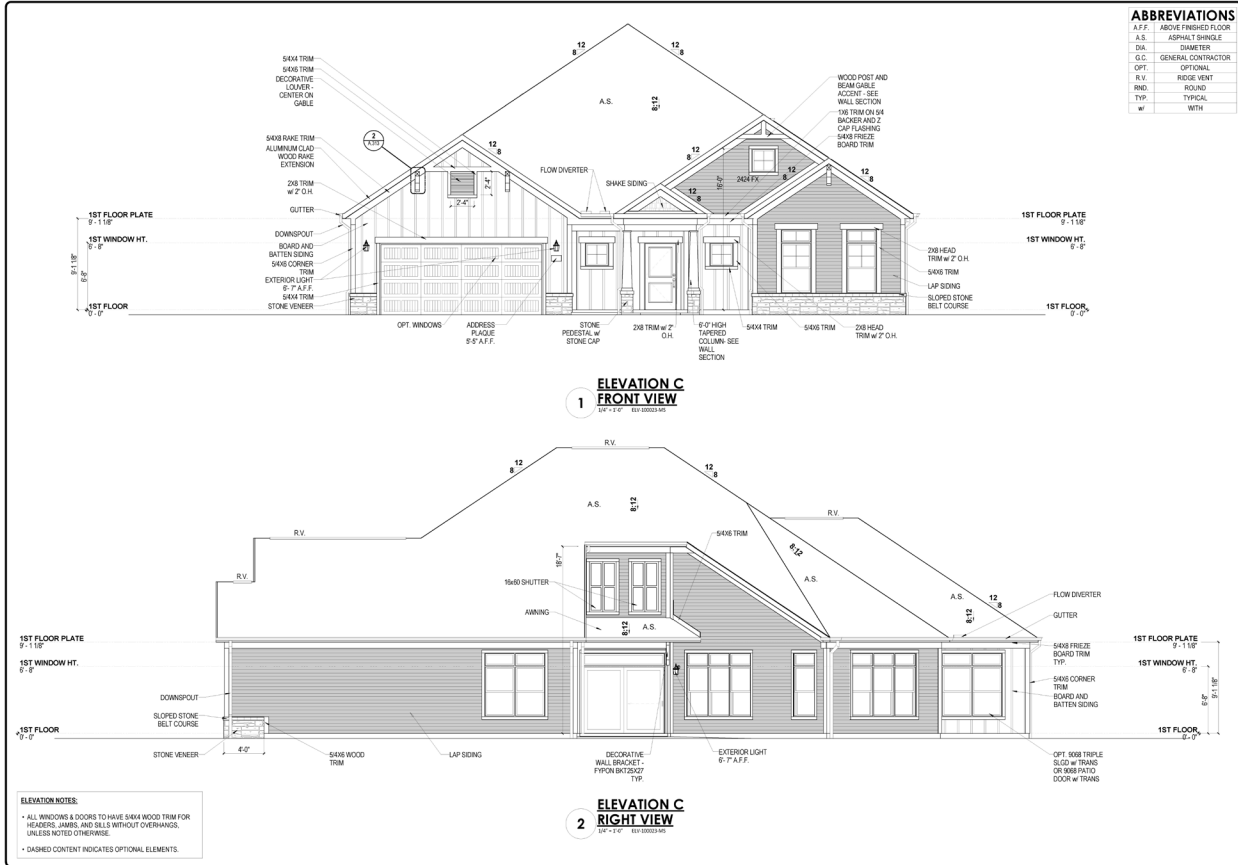
SHEET NUMBER
A.205.B

PROPRIETARY RIGHTS NOTICE

© 2020 EPICOR

PROVENANCE - ELEVATIONS

THE COURTYARDS OF FISHERS PUD



PROVENANCE - ELEVATIONS

PROJECT NO. DATE: REVISED

PROTOTYPE REVISION DATE: **04/23/2021**

ELEVATIONS - ELEV. C

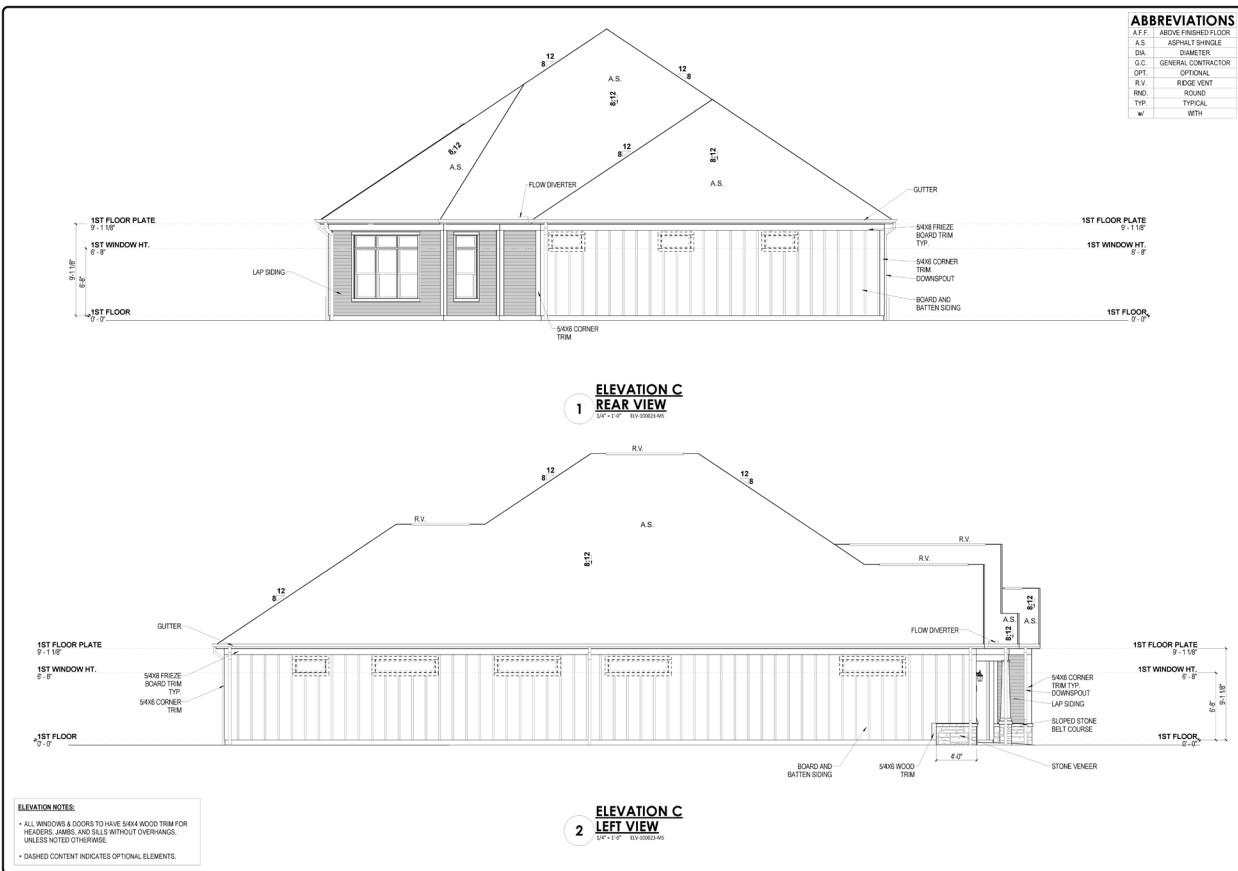
Project Code: E-1
Architectural Style: CRAFTSMAN
Change Number: LEFT

EPICON COMMUNITIES FRANCHISING

LOCATION: _____

SHEET NUMBER: **A.201.C**

PROPRIETARY RIGHTS NOTICE



PROVENANCE - ELEVATIONS

PROJECT NO. DATE: REVISED

PROTOTYPE REVISION DATE: **05/17/2021**

ELEVATIONS - ELEV. C

Project Code: E-1
Architectural Style: CRAFTSMAN
Change Number: LEFT

EPICON COMMUNITIES FRANCHISING

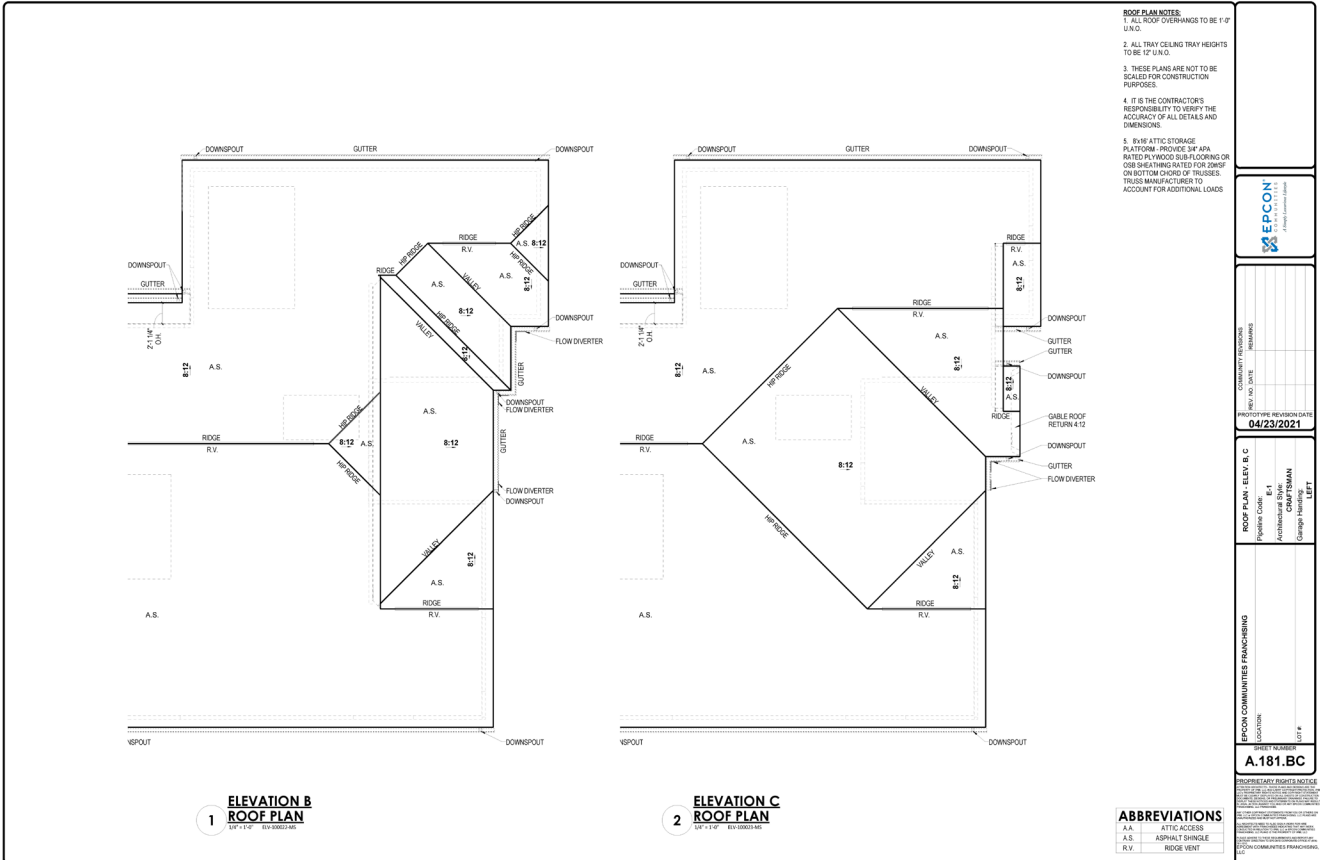
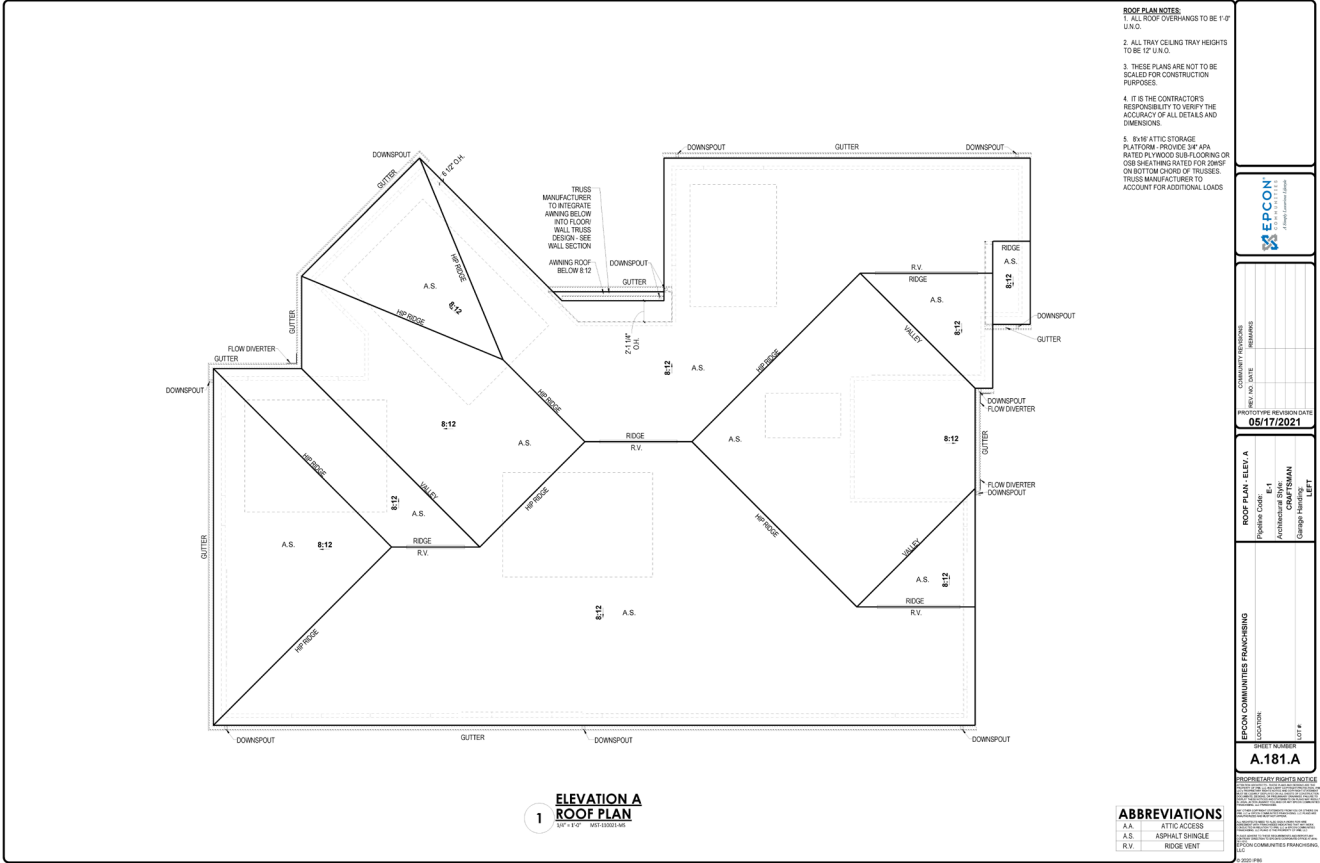
LOCATION: _____

SHEET NUMBER: **A.205.C**

PROPRIETARY RIGHTS NOTICE

PROVENANCE - ROOF PLANS

THE COURTYARDS OF FISHERS PUD



TAB 2

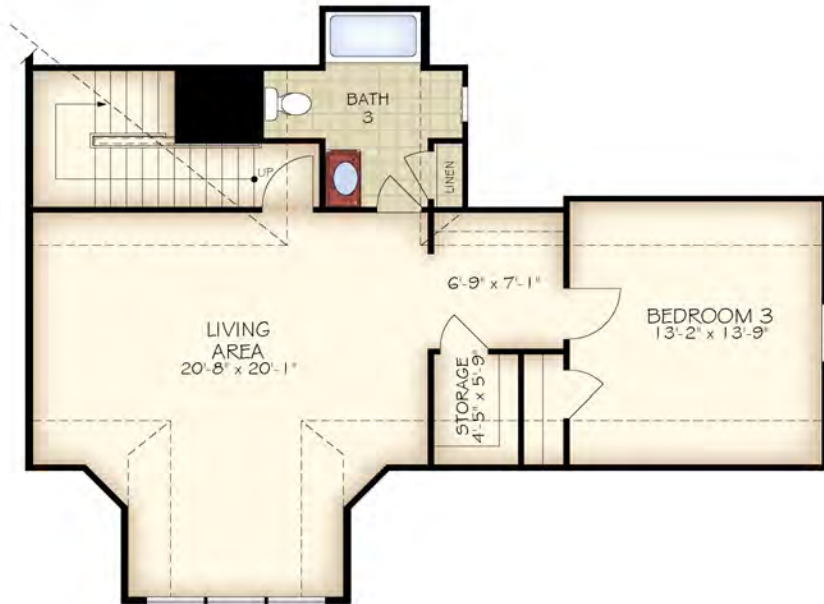
PROMENADE III - ILLUSTRATIVE ARCHITECTURE

THE COURTYARDS OF FISHERS PUD



PROMENADE III - FLOORPLANS

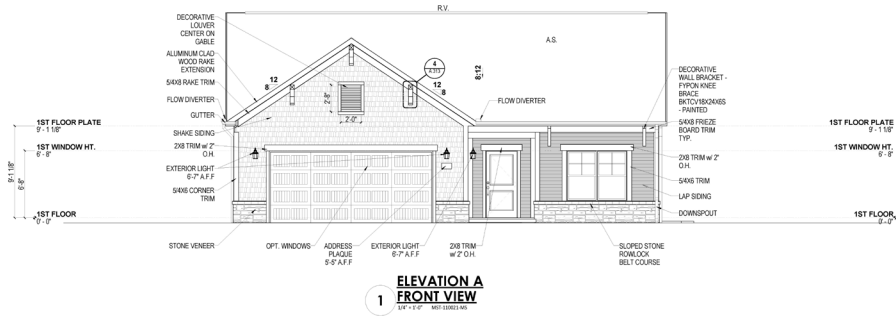
THE COURTYARDS OF FISHERS PUD



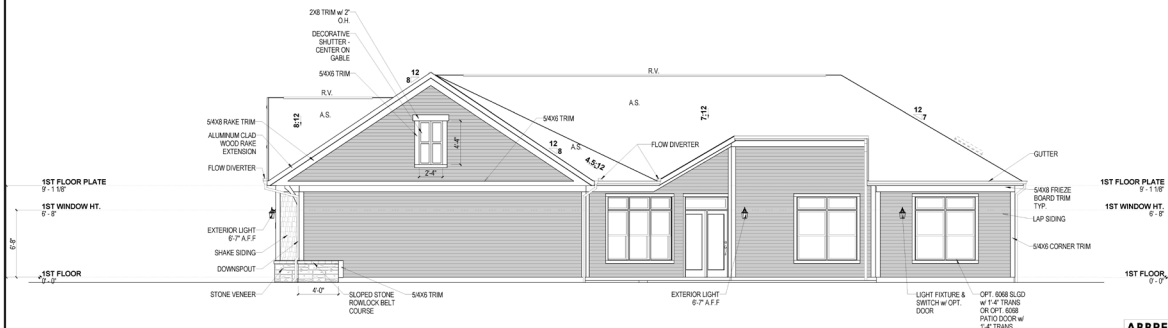
BONUS ROOM SECOND FLOOR PLAN

PROMENADE III - ELEVATIONS

THE COURTYARDS OF FISHERS PUD



**ELEVATION A
1 FRONT VIEW**
1/4" = 1'-0" MFR 10/22/18



**ELEVATION A
2 RIGHT VIEW**
1/4" = 1'-0" MFR 10/22/18

ELEVATION NOTES:

- ALL WINDOWS & DOORS TO HAVE S4X4 WOOD TRIM FOR HEADERS, JAMBS, AND SILLS WITHOUT OVERHANGS, UNLESS NOTED OTHERWISE.
- DASHED CONTENT INDICATES OPTIONAL ELEMENTS.

ABBREVIATIONS

A.F.F.	ABOVE FINISHED FLOOR
A.S.	ASPHALT SHINGLE
DIA.	DIAMETER
G.C.	GENERAL CONTRACTOR
OPT.	OPTIONAL
R.V.	RIDGE VENT
RND.	ROUND
TYP.	TYPICAL
W.	WITH

EPICOR COMMUNITIES FRANCHISING

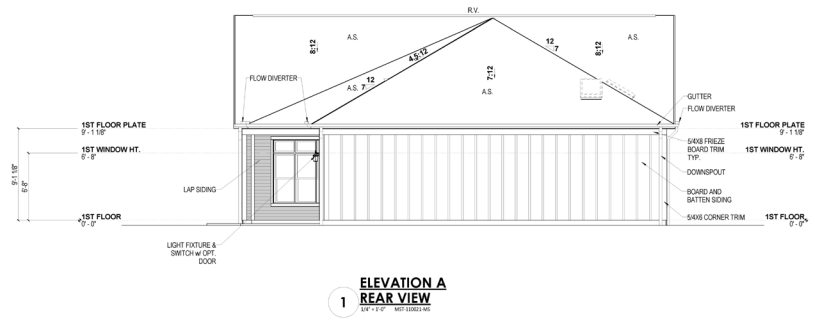
PHOTOGRAPHY: REVISION DATE: 06/04/21

ELEVATIONS - ELEV. A

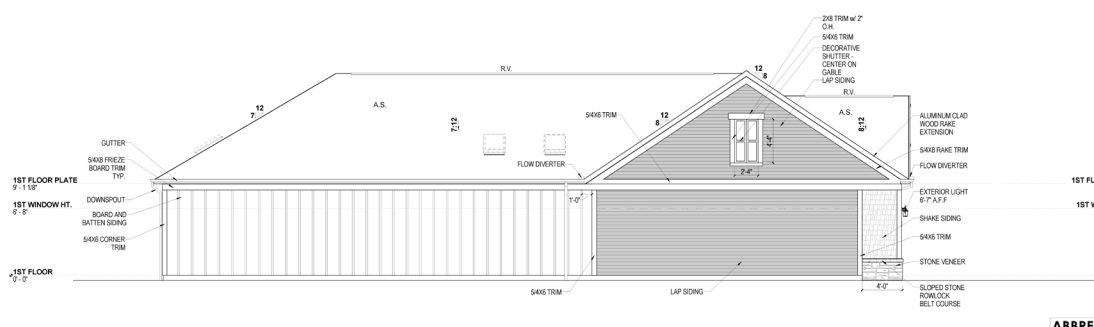
Figure Code: 04
Architectural Style: CRAFTSMAN
Change Number: LEFT

SHEET NUMBER
A.201.A

PROPRIETARY RIGHTS NOTICE



**ELEVATION A
1 REAR VIEW**
1/4" = 1'-0" MFR 10/22/18



**ELEVATION A
2 LEFT VIEW**
1/4" = 1'-0" MFR 10/22/18

ELEVATION NOTES:

- ALL WINDOWS & DOORS TO HAVE S4X4 WOOD TRIM FOR HEADERS, JAMBS, AND SILLS WITHOUT OVERHANGS, UNLESS NOTED OTHERWISE.
- DASHED CONTENT INDICATES OPTIONAL ELEMENTS.

ABBREVIATIONS

A.F.F.	ABOVE FINISHED FLOOR
A.S.	ASPHALT SHINGLE
DIA.	DIAMETER
G.C.	GENERAL CONTRACTOR
OPT.	OPTIONAL
R.V.	RIDGE VENT
RND.	ROUND
TYP.	TYPICAL
W.	WITH

EPICOR COMMUNITIES FRANCHISING

PHOTOGRAPHY: REVISION DATE: 06/04/21

ELEVATIONS - ELEV. A

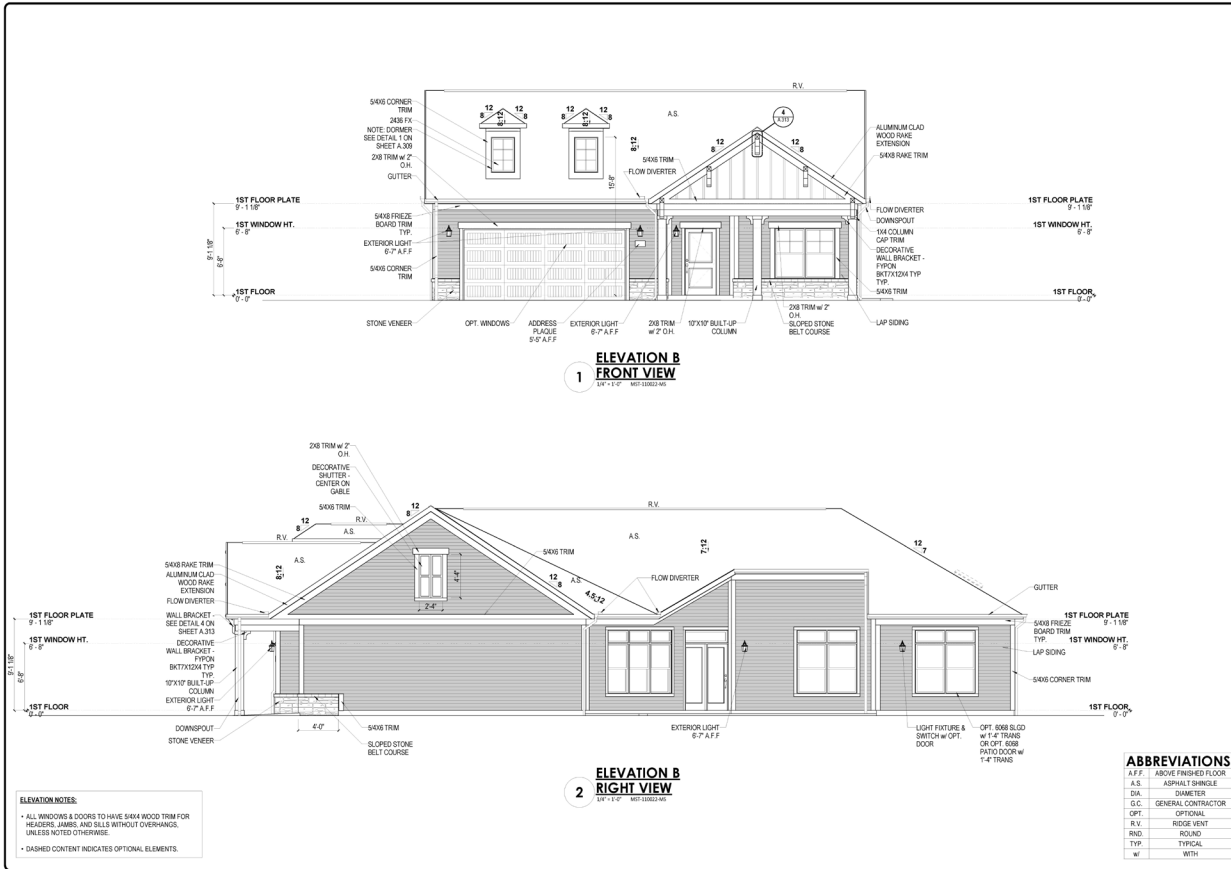
Figure Code: 04
Architectural Style: CRAFTSMAN
Change Number: LEFT

SHEET NUMBER
A.205.A

PROPRIETARY RIGHTS NOTICE

PROMENADE III - ELEVATIONS

THE COURTYARDS OF FISHERS PUD



PROPOSED PROJECT: **PROMENADE III**

PROJ. NO. DATE: **06/04/21**

PROTOTYPED REVISION DATE: **06/04/21**

ELEVATIONS - ELEV. B

Project Code: **04**
Architectural Style: **COMFISMAN**
Change Number: **LEFT**

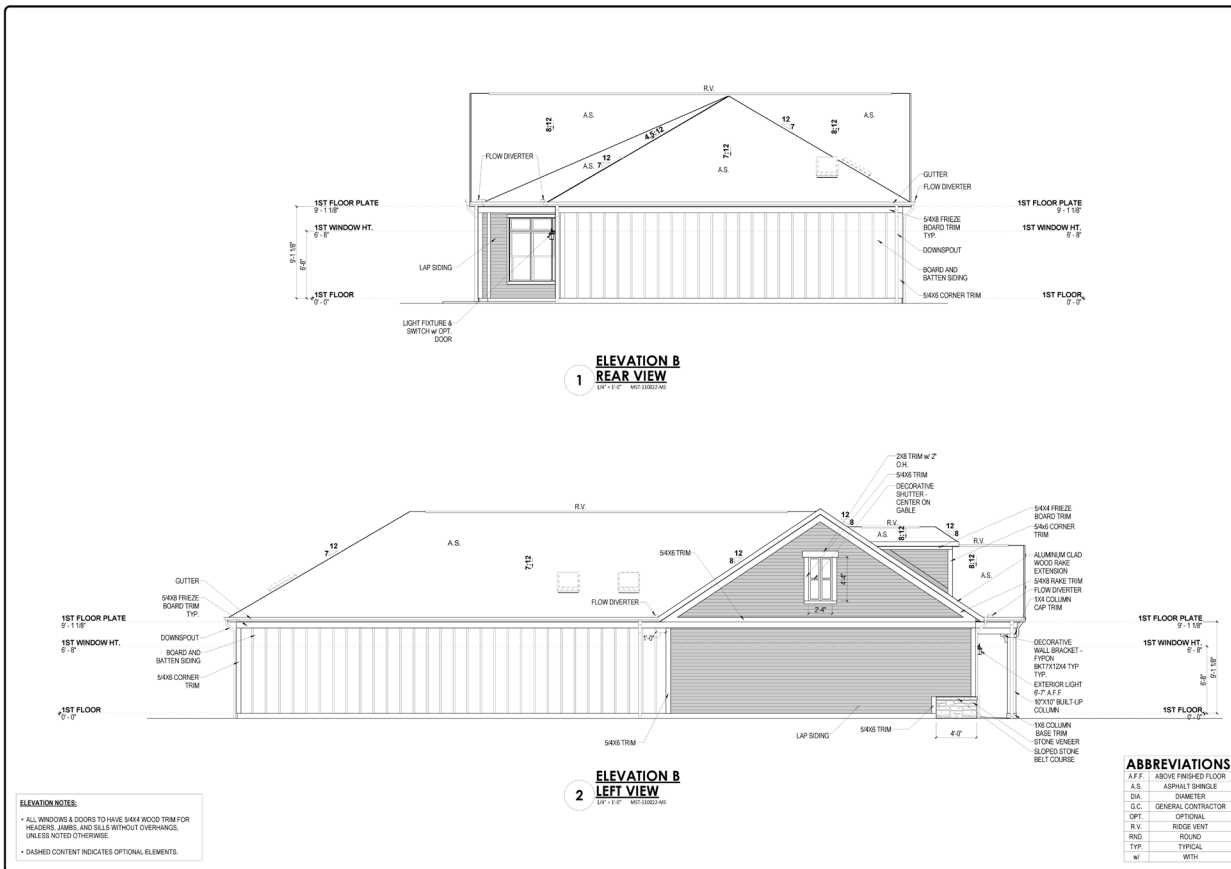
EPCOR COMMUNITIES FRANCHISING

LOCATION: **04**

SHEET NUMBER: **A.201.B**

PROFESSIONAL REGISTERED ARCHITECT
REGISTERED IN THE PROVINCE OF ONTARIO
EPCOR COMMUNITIES FRANCHISING

© 2020 EPCOR



PROPOSED PROJECT: **PROMENADE III**

PROJ. NO. DATE: **06/04/21**

PROTOTYPED REVISION DATE: **06/04/21**

ELEVATIONS - ELEV. B

Project Code: **04**
Architectural Style: **COMFISMAN**
Change Number: **LEFT**

EPCOR COMMUNITIES FRANCHISING

LOCATION: **04**

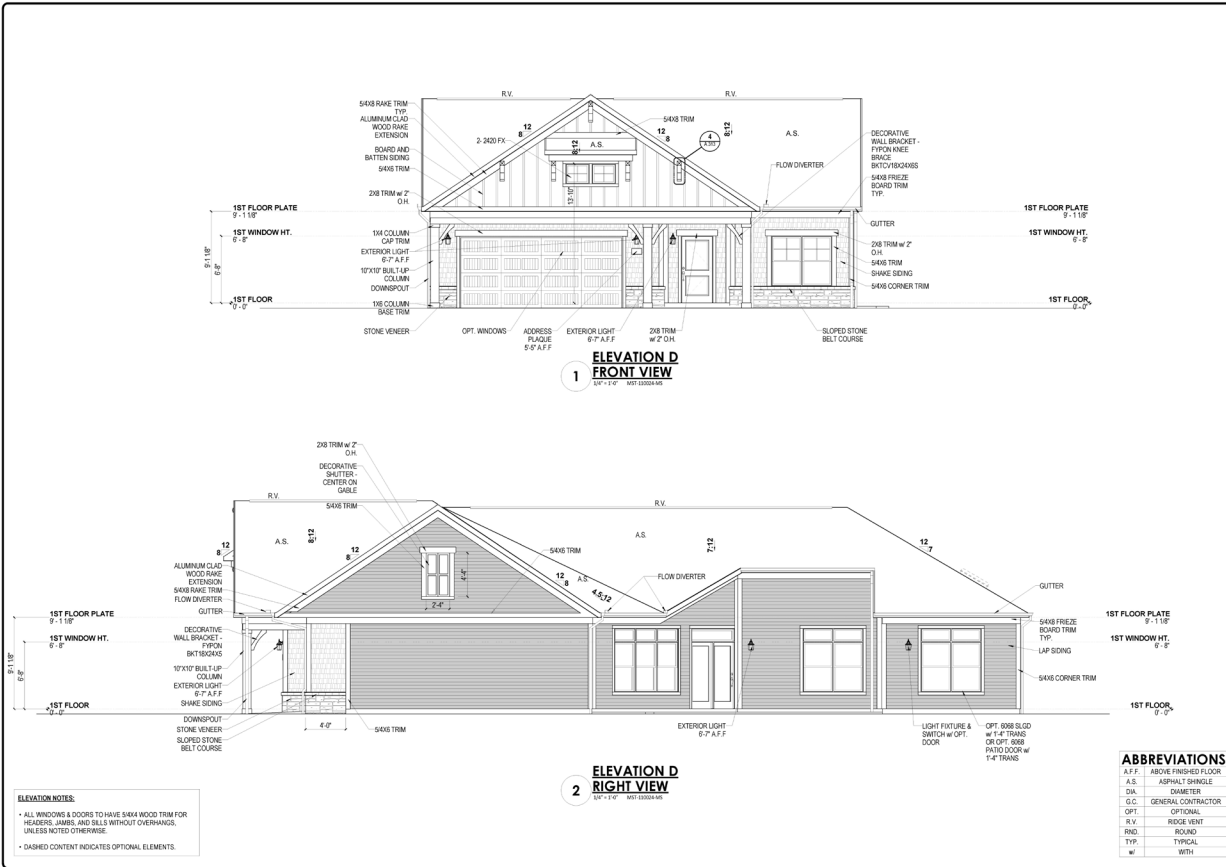
SHEET NUMBER: **A.205.B**

PROFESSIONAL REGISTERED ARCHITECT
REGISTERED IN THE PROVINCE OF ONTARIO
EPCOR COMMUNITIES FRANCHISING

© 2020 EPCOR

PROMENADE III - ELEVATIONS

THE COURTYARDS OF FISHERS PUD



PROJECT NO. 14-0000000000
REV. NO. DATE REVISIONS

PHOTO COPY REVISION DATE
06/04/21

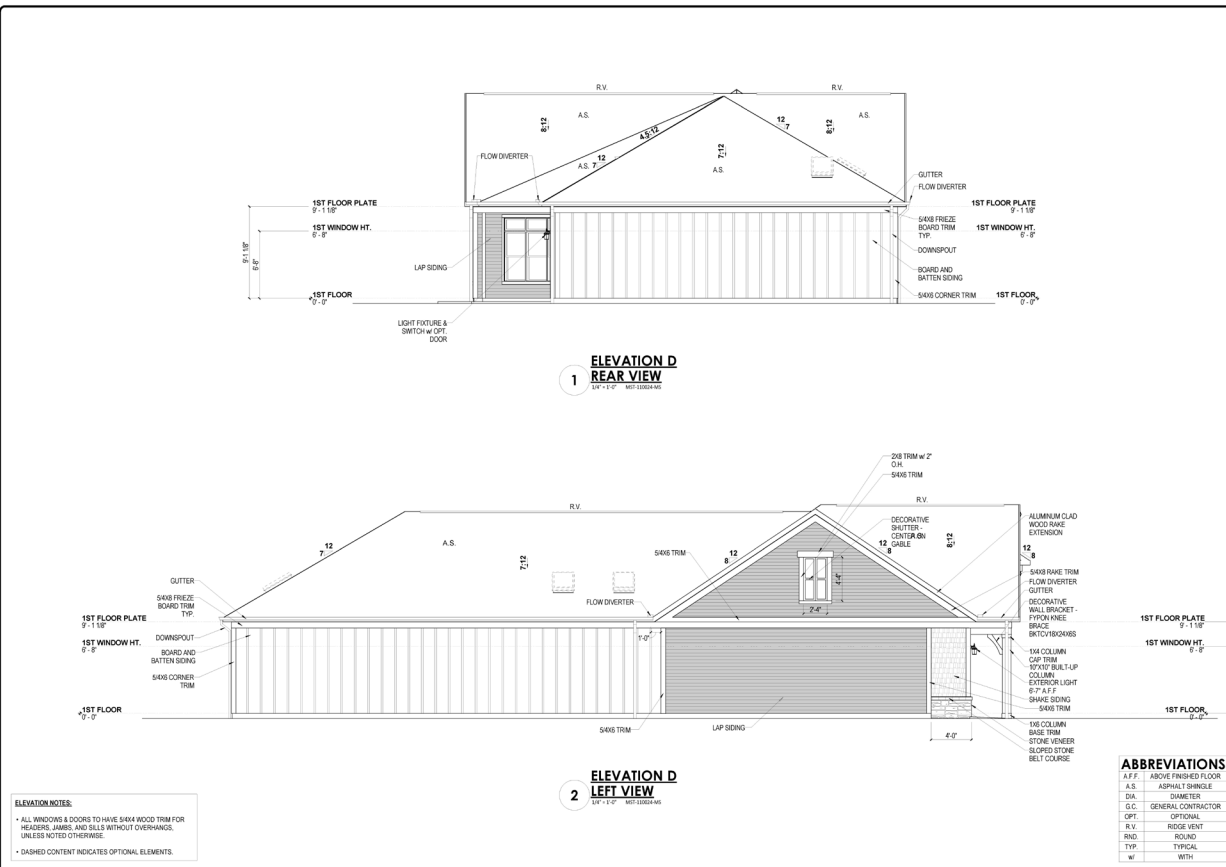
ELEVATIONS - ELEV. D
PAPER CODE: 04
ARCHITECTURAL STYLE: CRAFTSMAN
CHANGE NUMBER: LEFT

EPCON COMMUNITIES FRANCHISING
LOCATION: 14-0000000000

SHEET NUMBER
A.201.D

PROPRIETARY RIGHTS NOTICE
EPCON COMMUNITIES FRANCHISING
14-0000000000

© 2020 EPCON



PROJECT NO. 14-0000000000
REV. NO. DATE REVISIONS

PHOTO COPY REVISION DATE
06/04/21

ELEVATIONS - ELEV. D
PAPER CODE: 04
ARCHITECTURAL STYLE: CRAFTSMAN
CHANGE NUMBER: LEFT

EPCON COMMUNITIES FRANCHISING
LOCATION: 14-0000000000

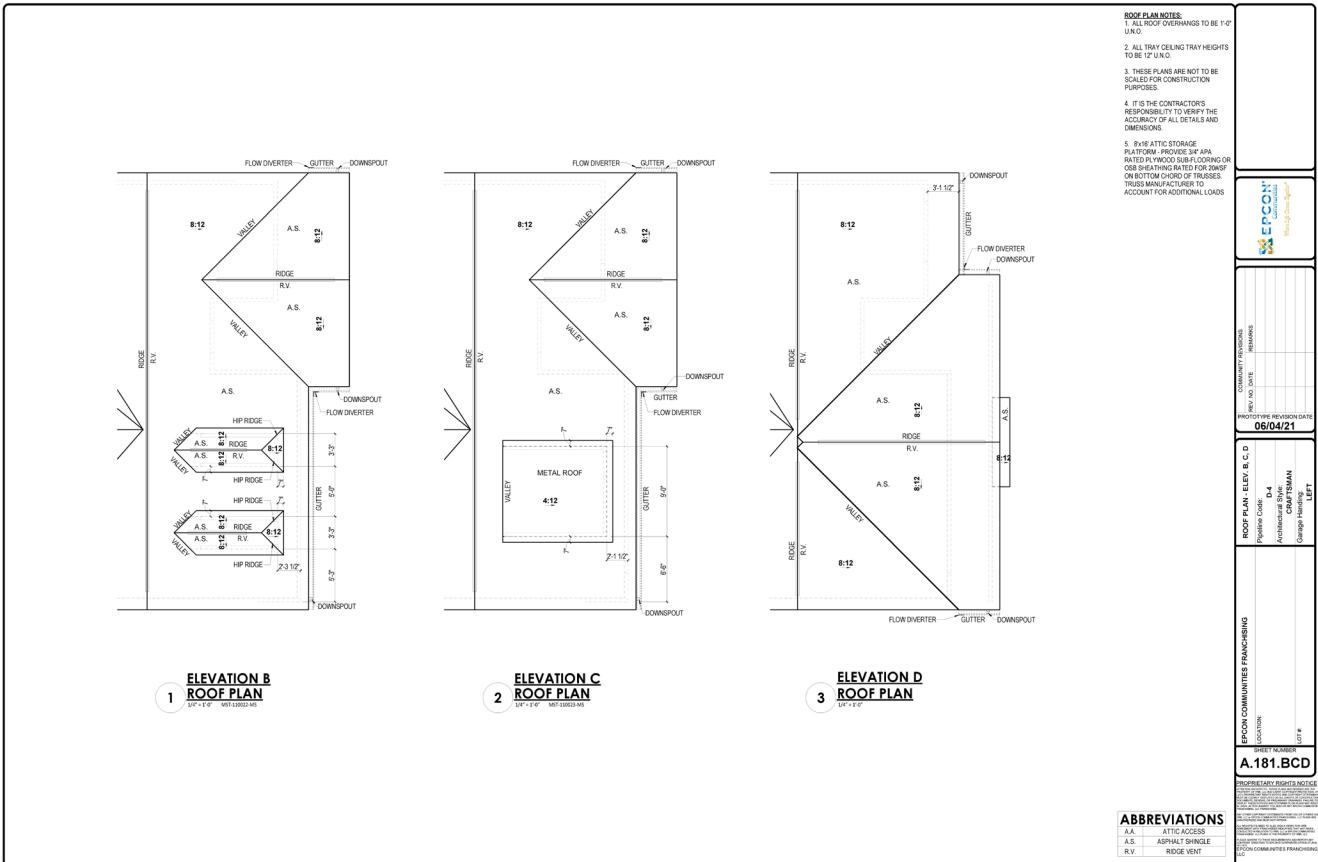
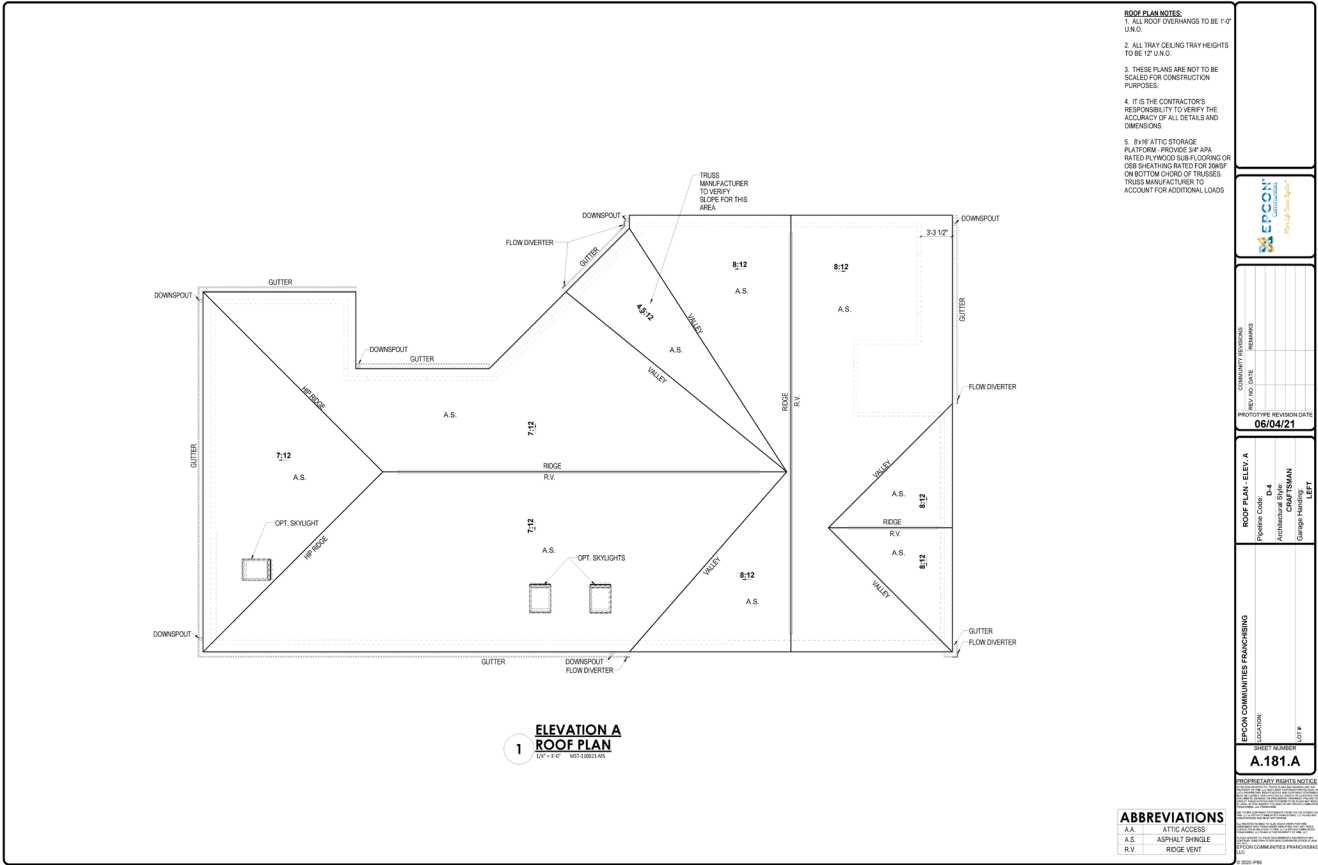
SHEET NUMBER
A.205.D

PROPRIETARY RIGHTS NOTICE
EPCON COMMUNITIES FRANCHISING
14-0000000000

© 2020 EPCON

PROMENADE III - ROOF PLANS

THE COURTYARDS OF FISHERS PUD



TAB 3

PORTICO - ILLUSTRATIVE ARCHITECTURE

THE COURTYARDS OF FISHERS PUD



PORTICO - FLOORPLANS

THE COURTYARDS OF FISHERS PUD



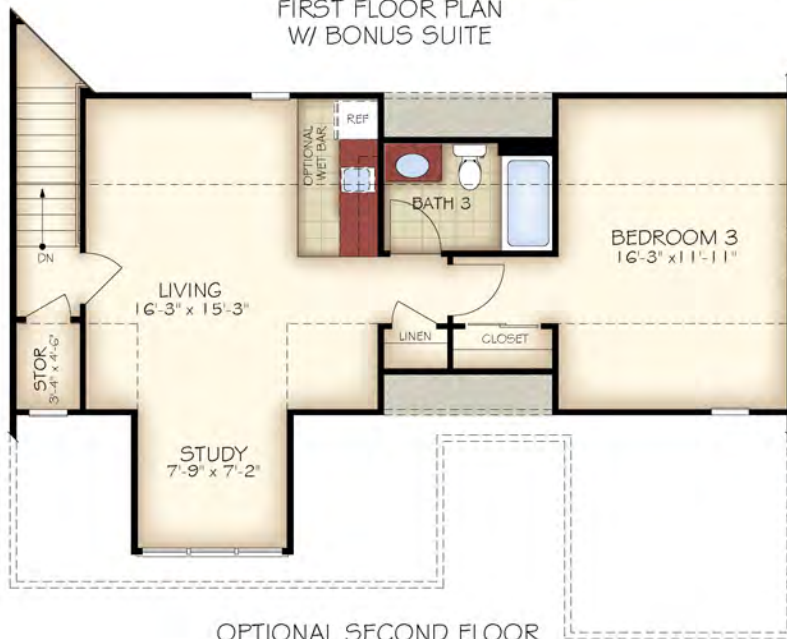
*Optional courtyard features shown: Artificial turf, Landscaping, Trellis/Pergola, Plant walls (2), Water feature, and Stepping stone paths (Palazzo & Portico only)

PORTICO - FLOORPLANS

THE COURTYARDS OF FISHERS PUD



FIRST FLOOR PLAN
W/ BONUS SUITE



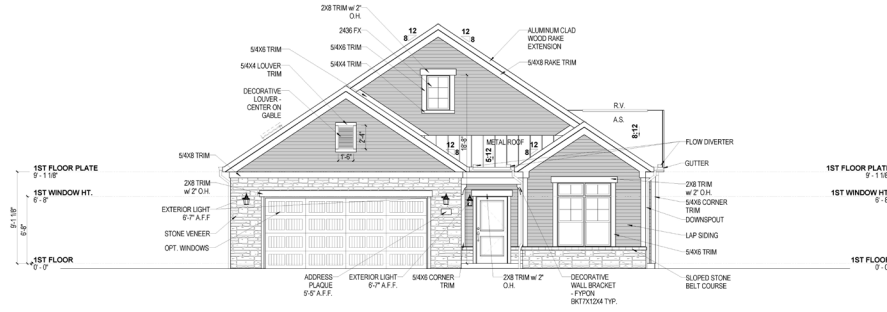
OPTIONAL SECOND FLOOR
BONUS SUITE

*Note: Tray Ceilings on the First Floor with Bonus Suite option are in the following areas:
Dining Room, Master Bedroom.

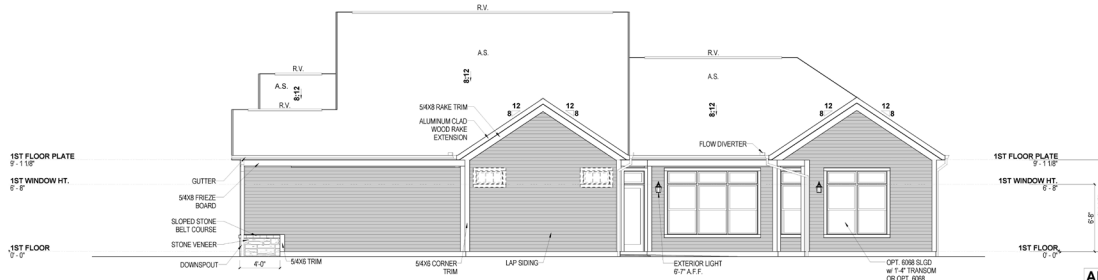
PORTICO BONUS
REV. 04.21

PORTICO - ELEVATIONS

THE COURTYARDS OF FISHERS PUD



1
ELEVATION B
FRONT VIEW
1/4" = 1'-0" EIV 20022-045



2
ELEVATION B
RIGHT VIEW
1/4" = 1'-0" EIV 20022-045

ELEVATION NOTES:

- ALL WINDOWS & DOORS TO HAVE 5x4x4 WOOD TRIM FOR HEADERS, JAMBS, AND SILLS WITHOUT OVERHANGS, UNLESS NOTED OTHERWISE.
- DASHED CONTENT INDICATES OPTIONAL ELEMENTS.

ABBREVIATIONS

A.F.F.	ABOVE FINISHED FLOOR
A.S.	ASPHALT SHINGLE
DIA.	DIAMETER
G.C.	GENERAL CONTRACTOR
OPT.	OPTIONAL
R.V.	RIDGE VENT
RND.	ROUND
TYP.	TYPICAL
W.	WIDTH

EPICOR COMMUNITIES FRANCHISING

PROJECT NO. DATE: 03/05/2021

PROTOTYPE REVISION DATE: 03/05/2021

PROJECT NUMBER: A.201.B

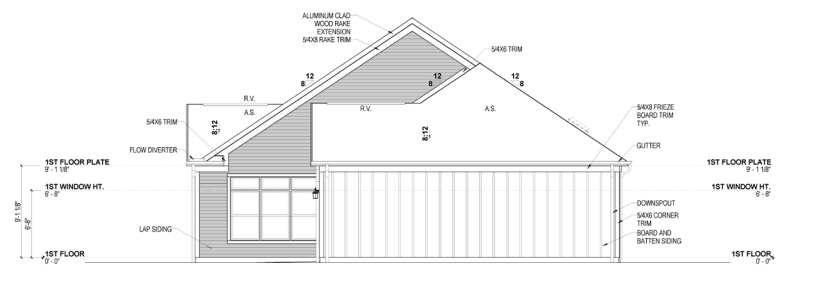
ELEVATIONS - ELEV. B

Project Code: 0-3

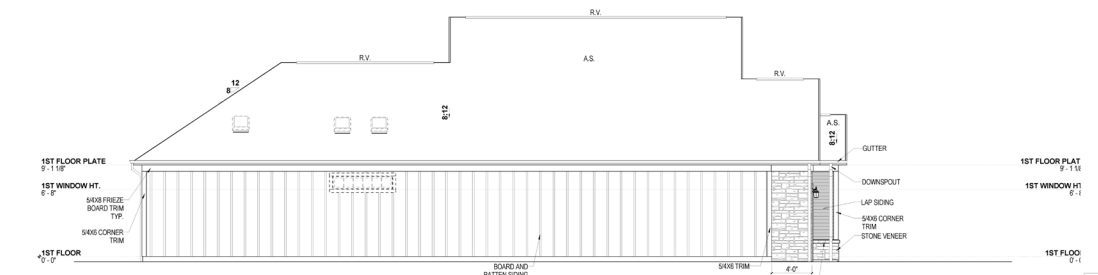
Architectural Style: CHAMPSMAN

Change Number: 0000

LEFT



1
ELEVATION B
REAR VIEW
1/4" = 1'-0" EIV 20022-045



2
ELEVATION B
LEFT VIEW
1/4" = 1'-0" EIV 20022-045

ELEVATION NOTES:

- ALL WINDOWS & DOORS TO HAVE 5x4x4 WOOD TRIM FOR HEADERS, JAMBS, AND SILLS WITHOUT OVERHANGS, UNLESS NOTED OTHERWISE.
- DASHED CONTENT INDICATES OPTIONAL ELEMENTS.

ABBREVIATIONS

A.F.F.	ABOVE FINISHED FLOOR
A.S.	ASPHALT SHINGLE
DIA.	DIAMETER
G.C.	GENERAL CONTRACTOR
OPT.	OPTIONAL
R.V.	RIDGE VENT
RND.	ROUND
TYP.	TYPICAL
W.	WIDTH

EPICOR COMMUNITIES FRANCHISING

PROJECT NO. DATE: 03/05/2021

PROTOTYPE REVISION DATE: 03/05/2021

PROJECT NUMBER: A.205.B

ELEVATIONS - ELEV. B

Project Code: 0-3

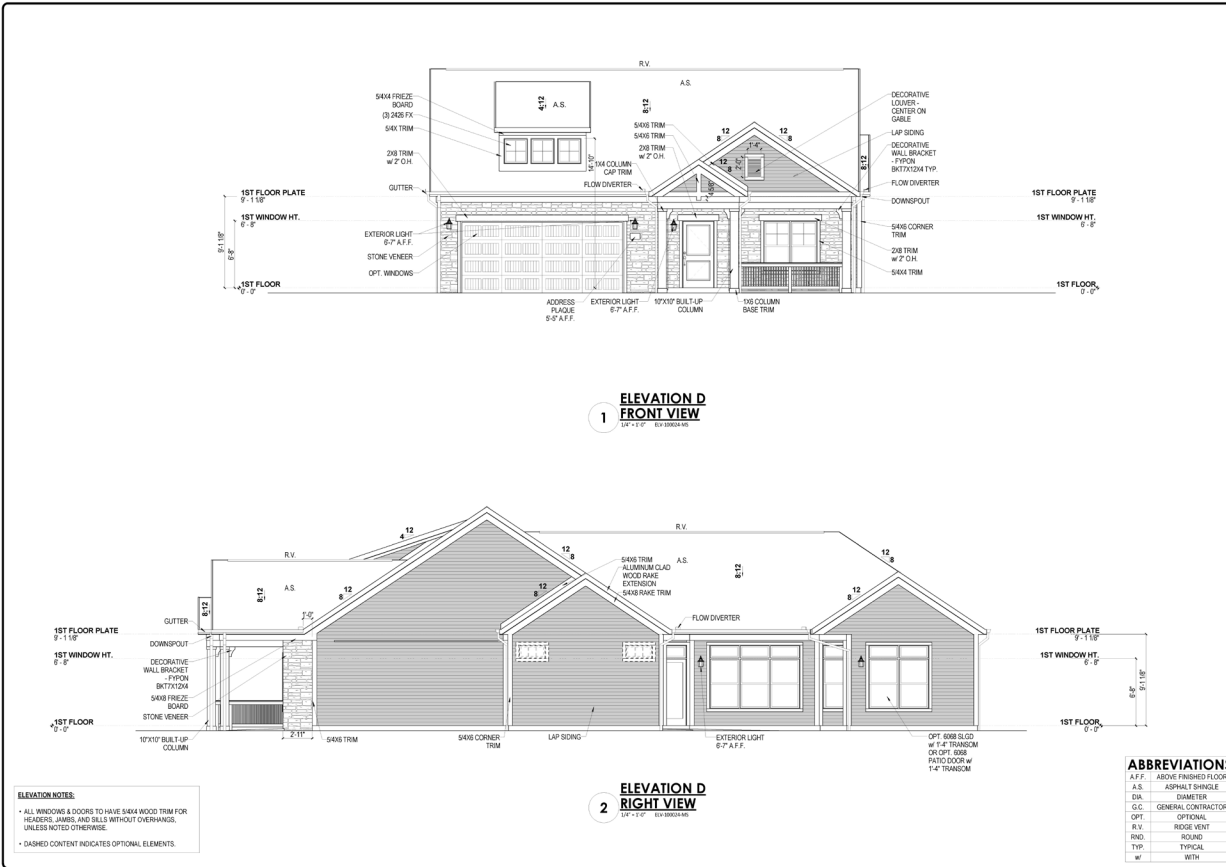
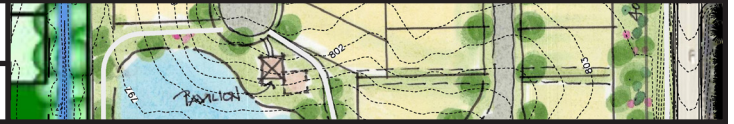
Architectural Style: CHAMPSMAN

Change Number: 0000

LEFT

PORTICO - ELEVATIONS

THE COURTYARDS OF FISHERS PUD



EPICON COMMUNITIES FRANCHISING

PROJECT NO. DATE: 03/05/2021

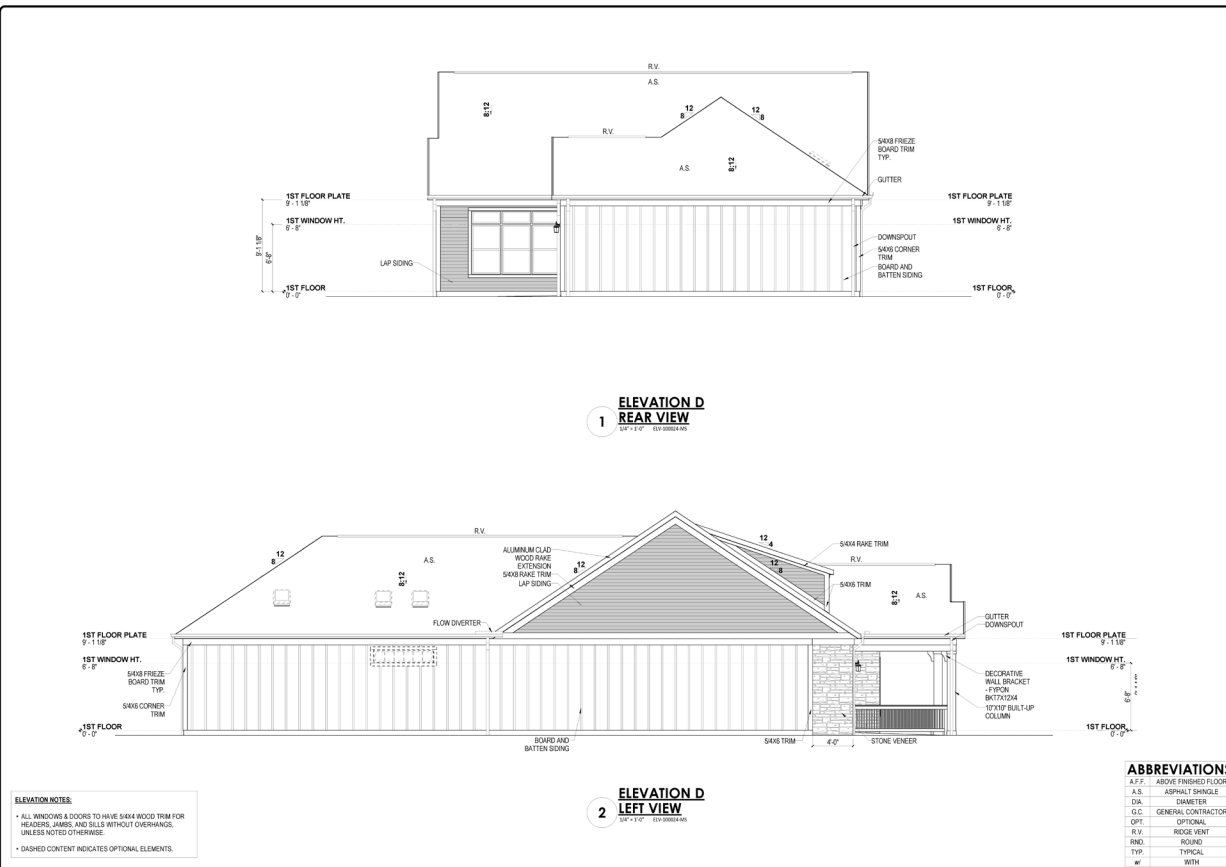
PROTOTYPE REVISION DATE: 03/05/2021

ELEVATIONS - ELEV. D

Figure Code: 0-3
 Architectural Style: CRAFTSMAN
 Change Number: LEFT

SHEET NUMBER: A.201.D

LOCATION:



EPICON COMMUNITIES FRANCHISING

PROJECT NO. DATE: 03/05/2021

PROTOTYPE REVISION DATE: 03/05/2021

ELEVATIONS - ELEV. D

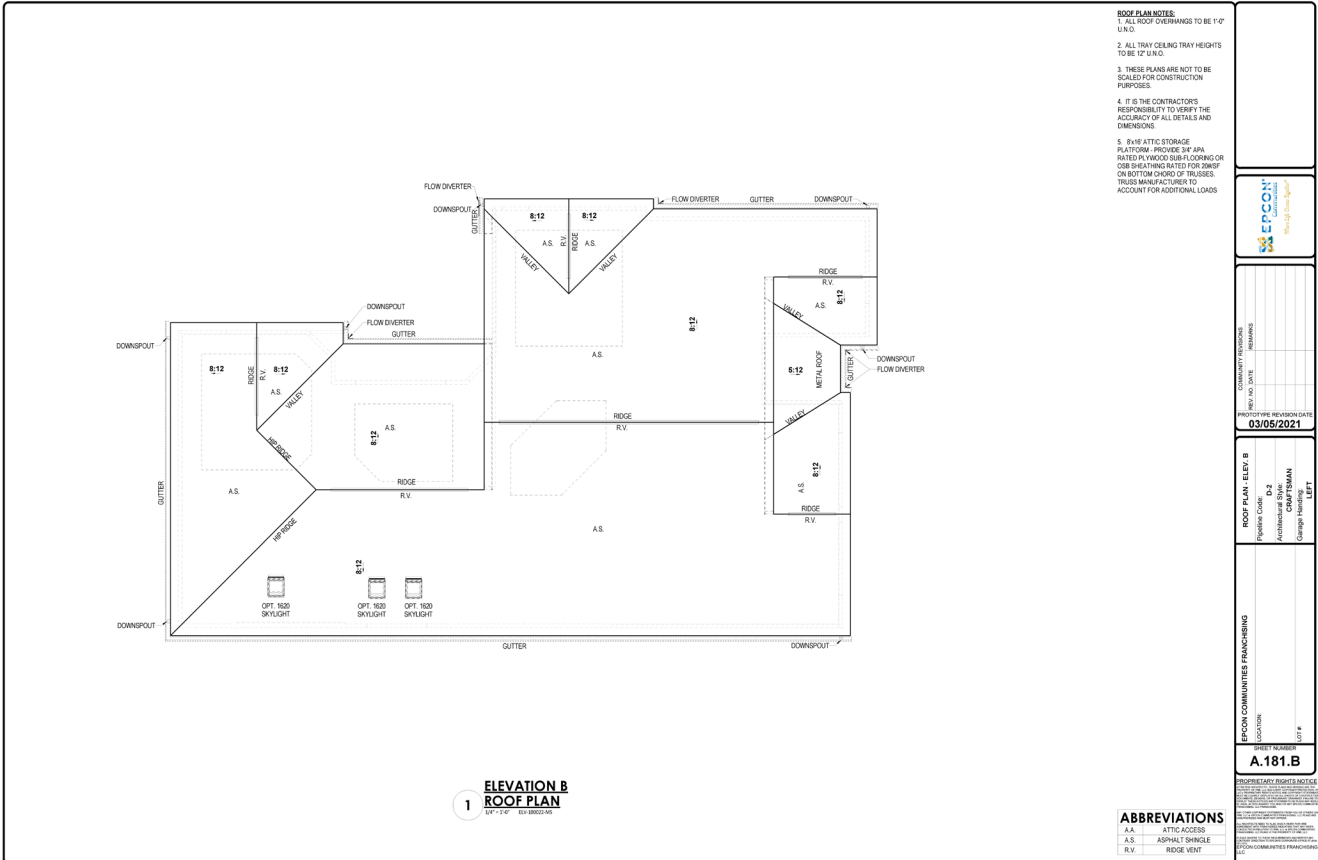
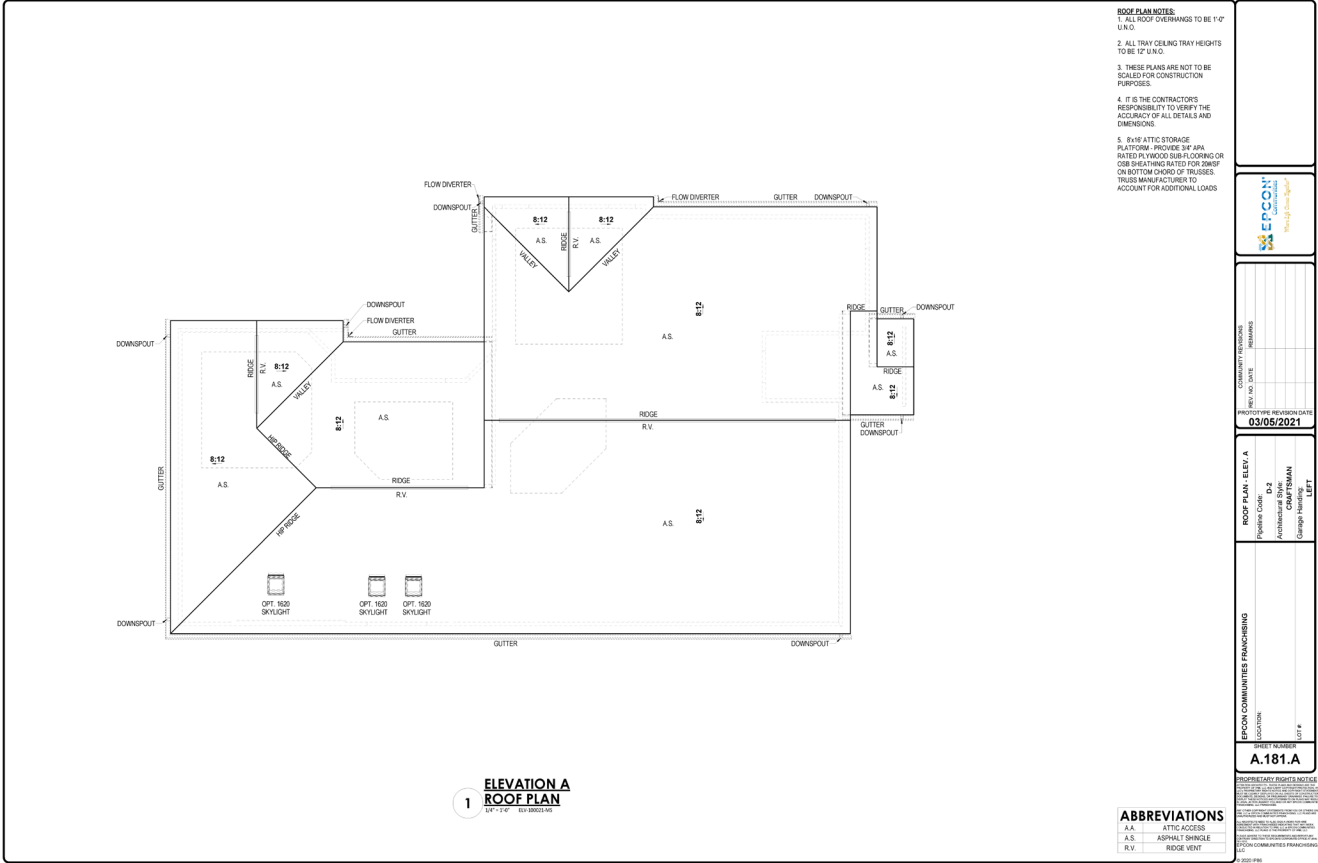
Figure Code: 0-3
 Architectural Style: CRAFTSMAN
 Change Number: LEFT

SHEET NUMBER: A.205.D

LOCATION:

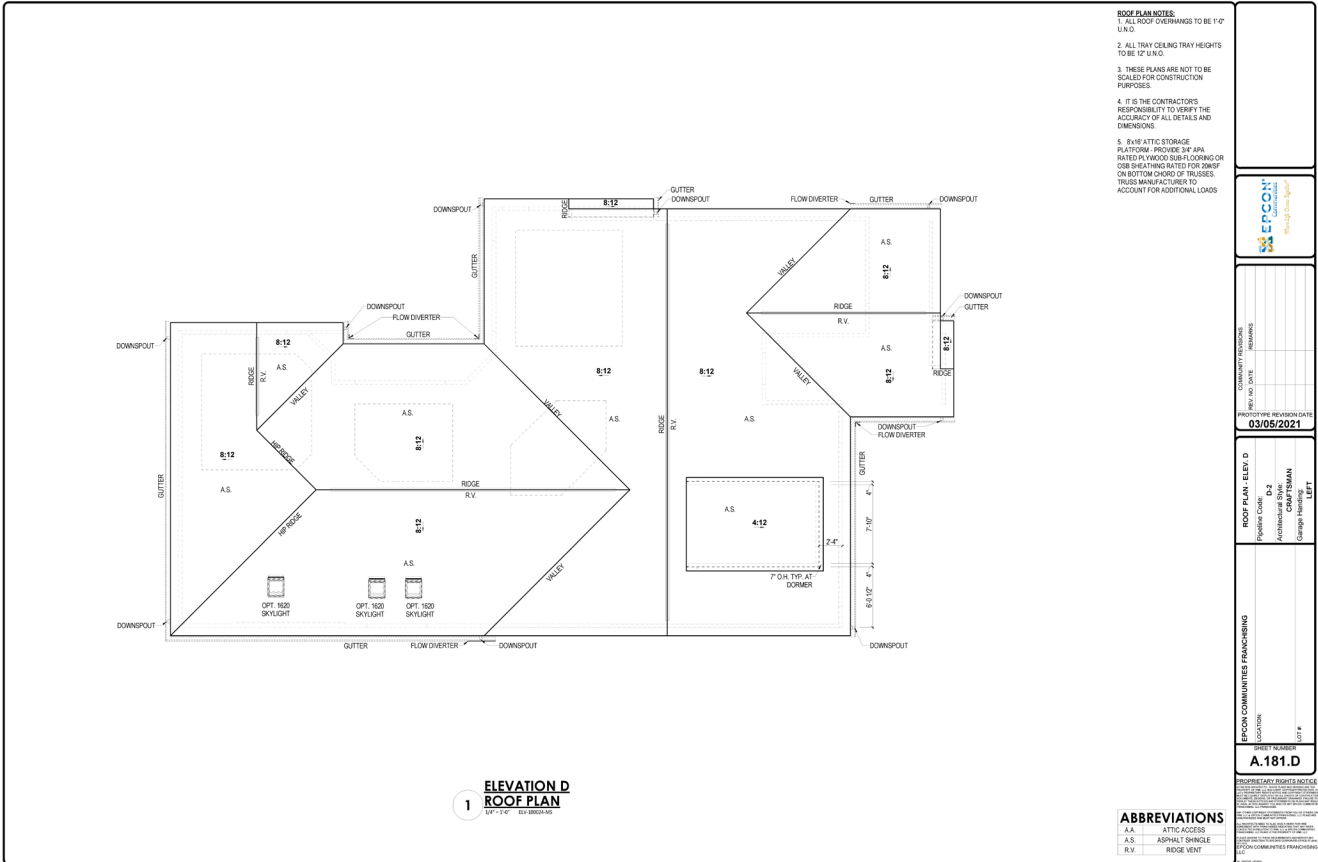
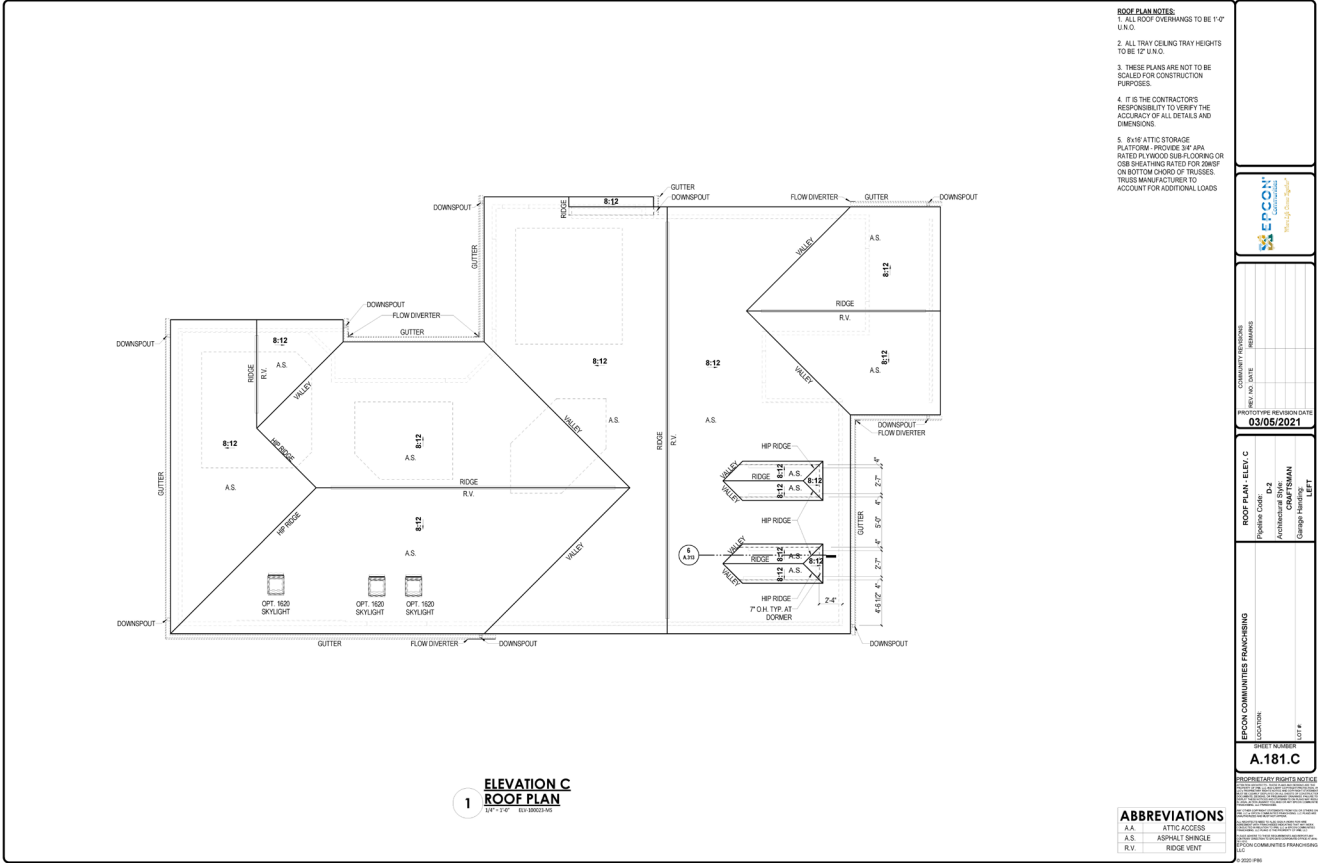
PORTICO - ROOF PLANS

THE COURTYARDS OF FISHERS PUD



PORTICO - ROOF PLANS

THE COURTYARDS OF FISHERS PUD



TAB 4

PALAZZO - ILLUSTRATIVE ARCHITECTURE

THE COURTYARDS OF FISHERS PUD



PALAZZO - FLOORPLANS

THE COURTYARDS OF FISHERS PUD



*Optional courtyard features shown: Artificial turf, Landscaping, Trellis/Pergola, Plant walls (2), Water feature, and Stepping stone paths (Palazzo 4 Portico only)

PALAZZO - FLOORPLANS

THE COURTYARDS OF FISHERS PUD



FIRST FLOOR PLAN W/
OPTIONAL BONUS SUITE

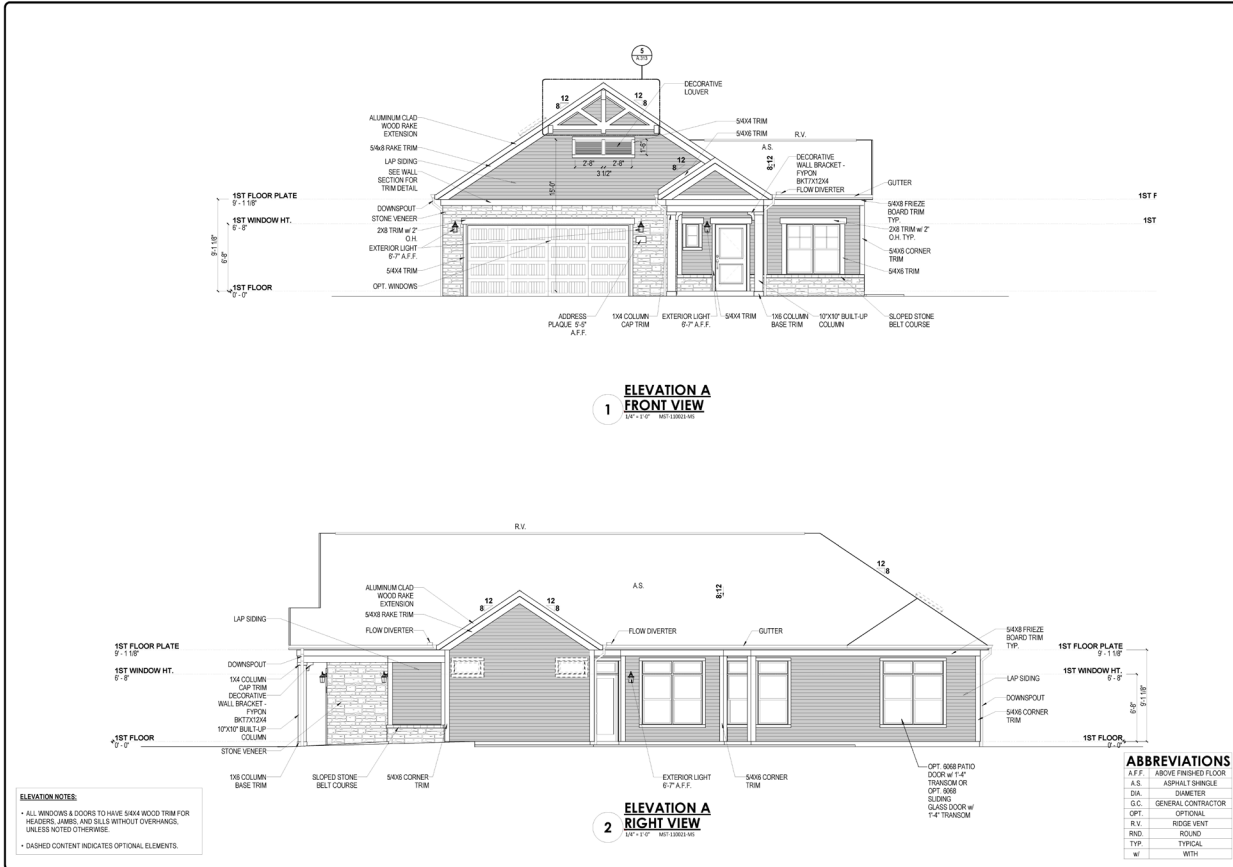


OPTIONAL SECOND FLOOR
BONUS SUITE

*Note: Tray Ceilings on the First Floor with Bonus Suite option are in the following areas: Master Bedroom.

PALAZZO - ELEVATIONS

THE COURTYARDS OF FISHERS PUD



EPICON COMMUNITIES FRANCHISING

PROJECT NO. DATE: _____

PROTOTYPE REVISION DATE: _____

ELEVATIONS - ELEV. A

Figure Code: 0-A
 Architectural Style: CHAMBERLAIN
 Change Number: LEFT

EPICON COMMUNITIES FRANCHISING

PROJECT NO. DATE: _____

PROTOTYPE REVISION DATE: _____

ELEVATIONS - ELEV. A

Figure Code: 0-A
 Architectural Style: CHAMBERLAIN
 Change Number: LEFT

EPICON COMMUNITIES FRANCHISING

PROJECT NO. DATE: _____

PROTOTYPE REVISION DATE: _____

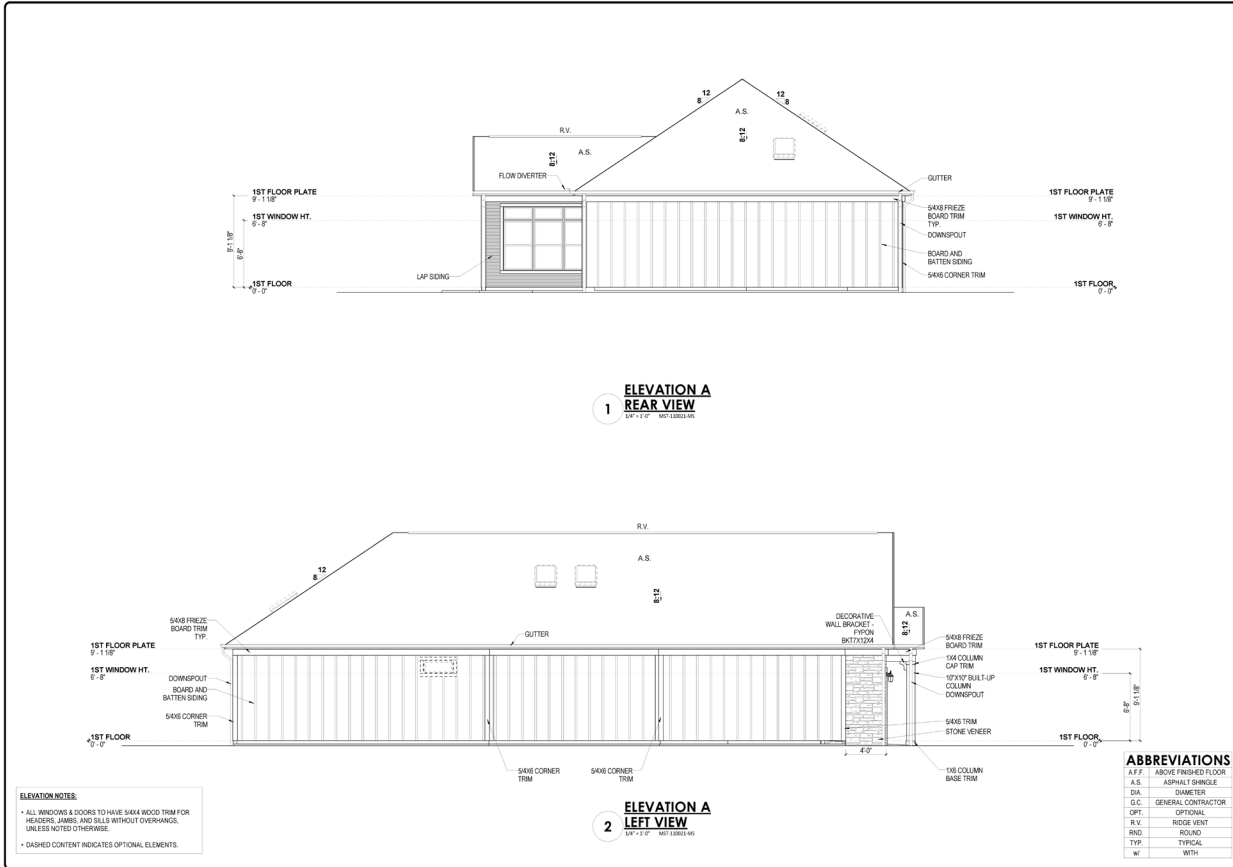
ELEVATIONS - ELEV. A

Figure Code: 0-A
 Architectural Style: CHAMBERLAIN
 Change Number: LEFT

ABBREVIATIONS

A.F.F.	ABOVE FINISHED FLOOR
A.S.	ASPHALT SHINGLE
DIA.	DIAMETER
G.C.	GENERAL CONTRACTOR
OPT.	OPTIONAL
R.V.	RIDGE VENT
RND.	ROUND
TYP.	TYPICAL
W.	WITH

© 2019 EPIC



EPICON COMMUNITIES FRANCHISING

PROJECT NO. DATE: _____

PROTOTYPE REVISION DATE: _____

ELEVATIONS - ELEV. A

Figure Code: 0-A
 Architectural Style: CHAMBERLAIN
 Change Number: LEFT

EPICON COMMUNITIES FRANCHISING

PROJECT NO. DATE: _____

PROTOTYPE REVISION DATE: _____

ELEVATIONS - ELEV. A

Figure Code: 0-A
 Architectural Style: CHAMBERLAIN
 Change Number: LEFT

EPICON COMMUNITIES FRANCHISING

PROJECT NO. DATE: _____

PROTOTYPE REVISION DATE: _____

ELEVATIONS - ELEV. A

Figure Code: 0-A
 Architectural Style: CHAMBERLAIN
 Change Number: LEFT

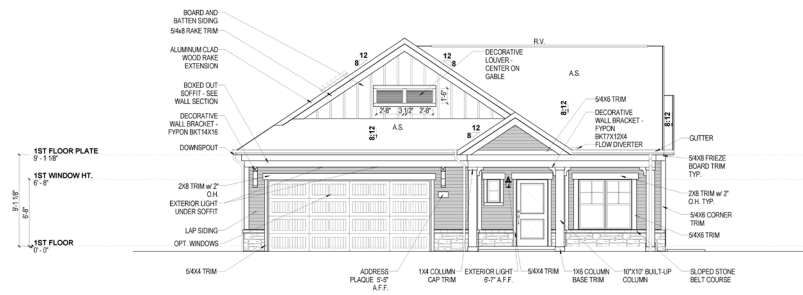
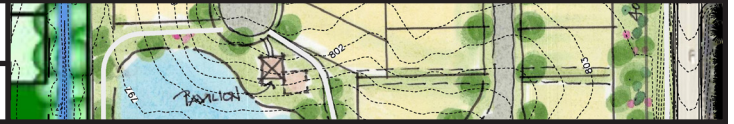
ABBREVIATIONS

A.F.F.	ABOVE FINISHED FLOOR
A.S.	ASPHALT SHINGLE
DIA.	DIAMETER
G.C.	GENERAL CONTRACTOR
OPT.	OPTIONAL
R.V.	RIDGE VENT
RND.	ROUND
TYP.	TYPICAL
W.	WITH

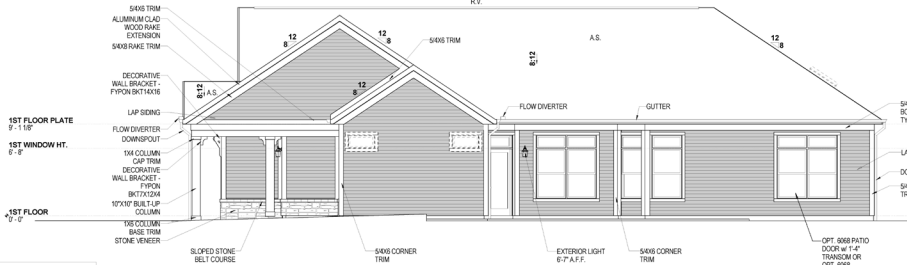
© 2019 EPIC

PALAZZO - ELEVATIONS

THE COURTYARDS OF FISHERS PUD



ELEVATION B FRONT VIEW
1/4\"/>



ELEVATION B RIGHT VIEW
1/4\"/>

ELEVATION NOTES:

- ALL WINDOWS & DOORS TO HAVE 5/8x4 WOOD TRIM FOR HEADERS, JAMBS, AND SILLS WITHOUT OVERHANGS, UNLESS NOTED OTHERWISE.
- DASHED CONTENT INDICATES OPTIONAL ELEMENTS.

ABBREVIATIONS

A.F.F.	ABOVE FINISHED FLOOR
A.S.	ASPHALT SHINGLE
DIA.	DIAMETER
G.C.	GENERAL CONTRACTOR
OPT.	OPTIONAL
R.V.	RIDGE VENT
RND.	ROUND
TYP.	TYPICAL
W.	WITH

EPICON COMMUNITIES FRANCHISING

PROJECT NO. DATE: _____

PROTOTYPE REVISION DATE: _____

EPICONS - ELEV. B

Project Code: 0-1

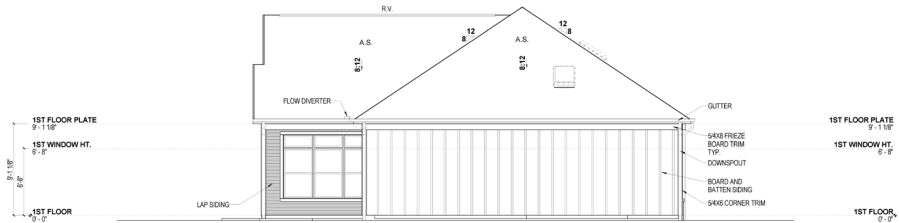
Architectural Style: CHAMP/STAN

Change Number: _____

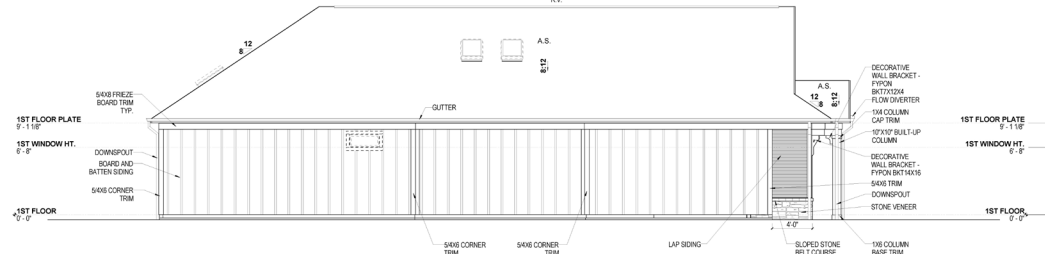
LEFT

ABBREVIATIONS

A.205.B



ELEVATION B REAR VIEW
1/4\"/>



ELEVATION B LEFT VIEW
1/4\"/>

ELEVATION NOTES:

- ALL WINDOWS & DOORS TO HAVE 5/8x4 WOOD TRIM FOR HEADERS, JAMBS, AND SILLS WITHOUT OVERHANGS, UNLESS NOTED OTHERWISE.
- DASHED CONTENT INDICATES OPTIONAL ELEMENTS.

ABBREVIATIONS

A.F.F.	ABOVE FINISHED FLOOR
A.S.	ASPHALT SHINGLE
DIA.	DIAMETER
G.C.	GENERAL CONTRACTOR
OPT.	OPTIONAL
R.V.	RIDGE VENT
RND.	ROUND
TYP.	TYPICAL
W.	WITH

EPICON COMMUNITIES FRANCHISING

PROJECT NO. DATE: _____

PROTOTYPE REVISION DATE: _____

EPICONS - ELEV. B

Project Code: 0-1

Architectural Style: CHAMP/STAN

Change Number: _____

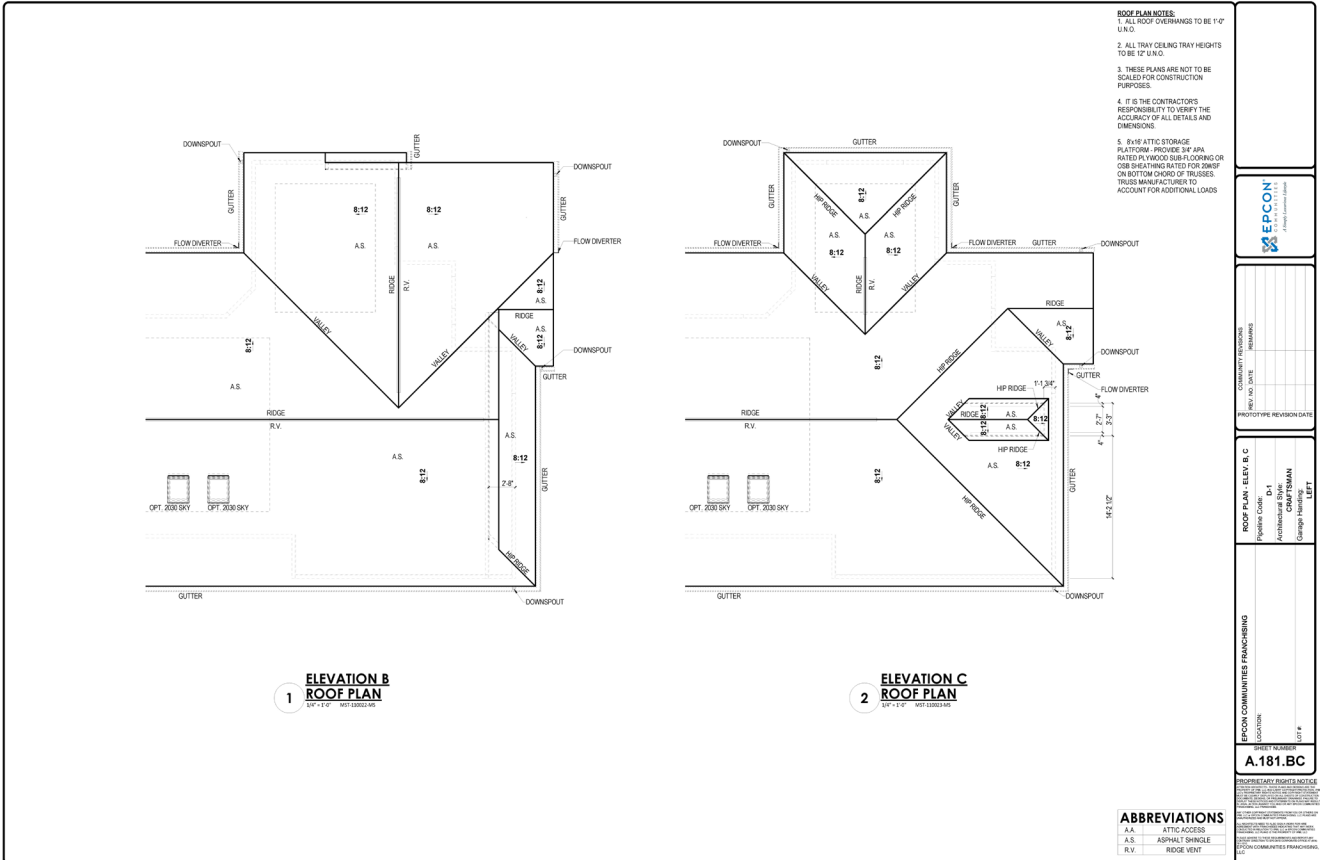
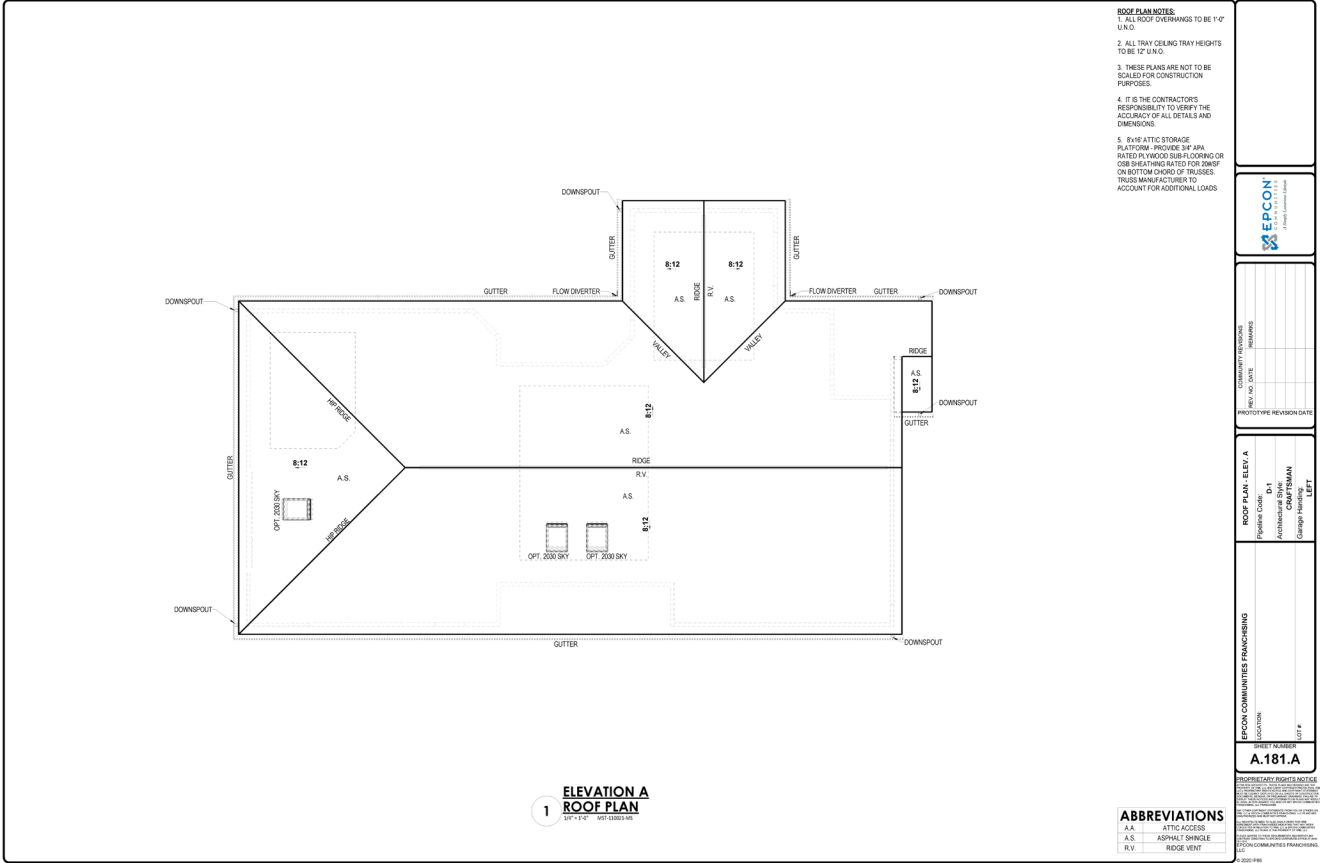
LEFT

ABBREVIATIONS

A.205.B

PALAZZO - ROOF PLANS

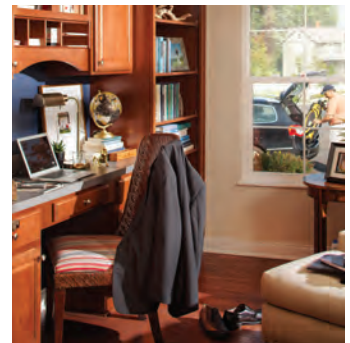
THE COURTYARDS OF FISHERS PUD



TAB 5

ILLUSTRATIVE PHOTOGRAPHS

THE COURTYARDS OF FISHERS PUD



ILLUSTRATIVE COURTYARD EXHIBIT

THE COURTYARDS OF FISHERS PUD



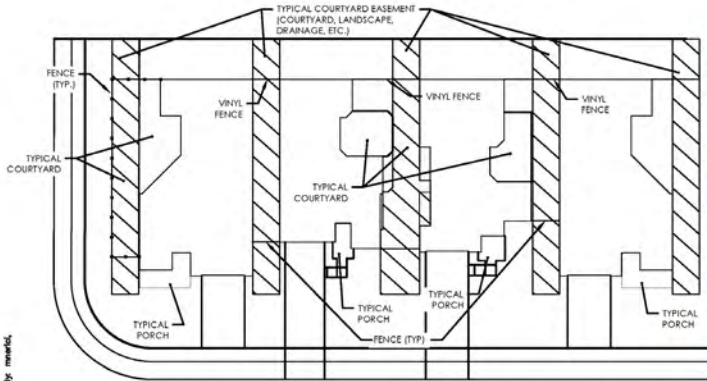
TYPICAL COURTYARD



TYPICAL COURTYARD ADJACENT TO OPEN SPACE



TYPICAL COURTYARD/ SHARED USE SPACE



PLAN VIEW - 3 TYPICAL UNITS/COURTYARDS



TYPICAL COURTYARD ADJACENT TO OPEN STREET



TYPICAL COURTYARD



TYPICAL COURTYARD ADJACENT TO OPEN SPACE



TYPICAL COURTYARD/SHARED USE SPACE



TYPICAL COURTYARD



TYPICAL COURTYARD

\\msb001\proj\proj\20200060\correspondence\submittals\look 8001\render\rendering - fishers\in\Draw\CAD\set\Rendering_2022-01-04\20200060-Becker_Site_Plan.dwg, Last Saved By: mmh61, 1/5/2022 12:44 PM

TYPICAL COURTYARD TREATMENT

BECKER
FISHERS, INDIANA



JANUARY 5, 2021
20200060
TASK: 9001

ILLUSTRATIVE COURTYARD EXHIBIT

THE COURTYARDS OF FISHERS PUD



EXTERIOR MATERIALS SAMPLE BOARD

THE COURTYARDS OF FISHERS PUD



The Courtyards of Fishers

Tan-1 Color Palette



CertainTeed - Dimensional Landmark Driftwood



Desert Tan



Tan

Windows

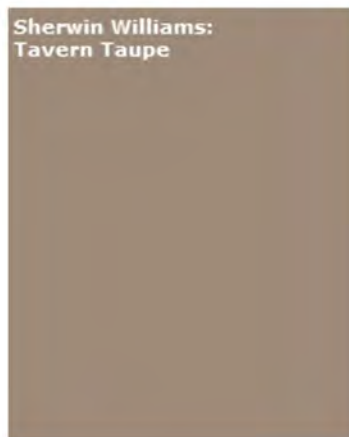


Desert Sand



The Courtyards of Fishers

Tan-2 Color Palette



CertainTeed - Dimensional Landmark Driftwood



Desert Tan



Tan

Windows



Desert Sand

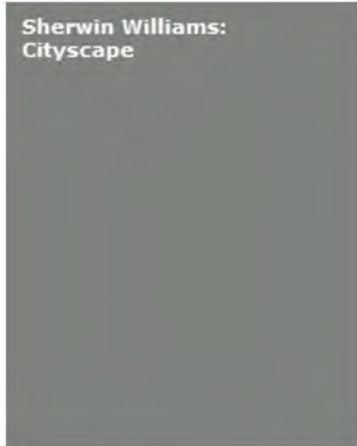
EXTERIOR MATERIALS SAMPLE BOARD

THE COURTYARDS OF FISHERS PUD

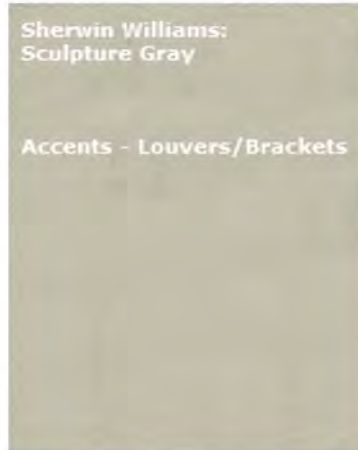


The Courtyards of Fishers

Tan-6 Color Palette



Sherwin Williams:
Cityscape



Sherwin Williams:
Sculpture Gray

Accents - Louvers/Brackets



Sherwin Williams:
Dark Night

Accents - Shutters
Accents - Front Door



CertainTeed - Dimensional Landmark
Driftwood



Desert Tan



Garage Door

Gutters
Soffit
Fascia



Tan

Windows



Desert Sand



The Courtyards of Fishers

Tan-7 Color Palette



Sherwin Williams:
Charcoal



Sherwin Williams:
Sculpture Gray

Accents - Louvers/Brackets



Sherwin Williams:
Rookwood Dark Red

Accents - Shutters
Accents - Front Door



CertainTeed - Dimensional Landmark
Driftwood



Desert Tan



Garage Door

Gutters
Soffit
Fascia



Tan

Windows



Desert Sand

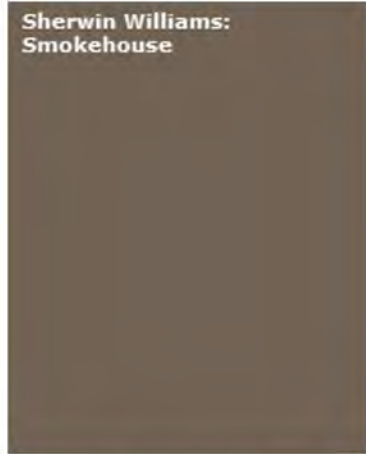
EXTERIOR MATERIALS SAMPLE BOARD

THE COURTYARDS OF FISHERS PUD



The Courtyards of Fishers

Tan-8 Color Palette



Sherwin Williams:
Smokehouse



Sherwin Williams:
Tavern Taupe

Accents-Louvers/Brackets



Sherwin Williams:
Black Fox

Accents - Shutters
Accents - Front Door



CertainTeed - Dimensional Landmark
Driftwood



Taupe



Garage Door



Gutters
Soffit
Fascia

Sandstone

Windows

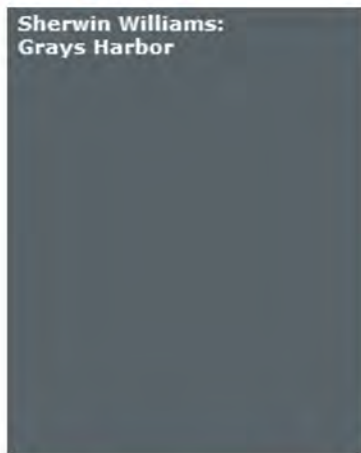


Desert Sand



The Courtyards of Fishers

Tan-9 Color Palette

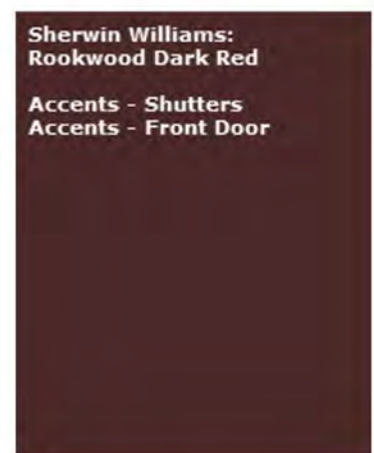


Sherwin Williams:
Grays Harbor



Sherwin Williams:
Tavern Taupe

Accents-Louvers/Brackets



Sherwin Williams:
Rookwood Dark Red

Accents - Shutters
Accents - Front Door



CertainTeed - Dimensional Landmark
Driftwood



Taupe



Garage Door



Gutters
Soffit
Fascia

Sandstone

Windows



Desert Sand

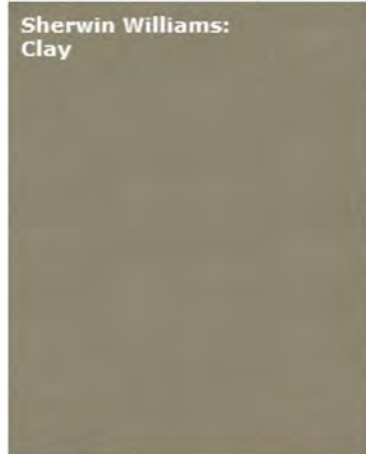
EXTERIOR MATERIALS SAMPLE BOARD

THE COURTYARDS OF FISHERS PUD



The Courtyards of Fishers

Tan-10 Color Palette

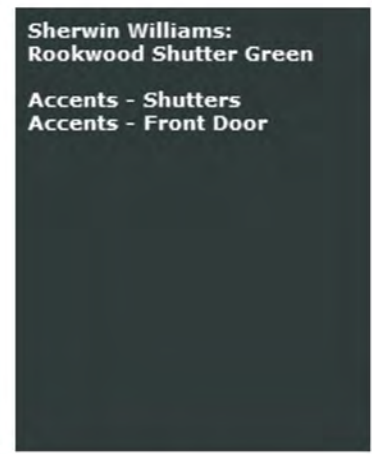


Sherwin Williams:
Clay



Sherwin Williams:
Sculpture Gray

Accents - Louvers/Brackets



Sherwin Williams:
Rookwood Shutter Green

Accents - Shutters
Accents - Front Door



CertainTeed - Dimensional Landmark
Driftwood



Desert Tan



Garage Door

Gutters
Soffit
Fascia



Tan

Windows

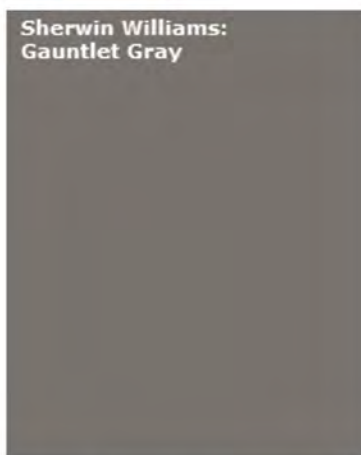


Desert Sand



The Courtyards of Fishers

Tan-11 Color Palette



Sherwin Williams:
Gauntlet Gray



Sherwin Williams:
Sculpture Gray

Accents - Louvers/Brackets



Sherwin Williams:
Dark Night

Accents - Shutters
Accents - Front Door



CertainTeed - Dimensional Landmark
Driftwood



Desert Tan



Garage Door

Gutters
Soffit
Fascia



Tan

Windows



Desert Sand

EXTERIOR MATERIALS SAMPLE BOARD

THE COURTYARDS OF FISHERS PUD



The Courtyards of Fishers

Masonry Choices

Masonry Choice 1

Stone: Environmental Stoneworks
Epcon Custom Color



Masonry Choice 2

Stone: Environmental Stoneworks
Dakota Cutstone



Exhibit B.3 – Illustrative Architectural Exhibit



